



Matthew G. Bevin
Governor

**COMMONWEALTH OF KENTUCKY
TRANSPORTATION CABINET**

Frankfort, Kentucky 40622
www.transportation.ky.gov/

Greg Thomas
Secretary

August 22, 2018

CALL NO. 200
CONTRACT ID NO. 181026
ADDENDUM # 1

Subject: MCCREARY - WHITLEY COUNTIES, 121GR18D026-STP
Letting August 24, 2018

- (1) Revised - Cover Page - Page 1 of 126
- (2) Revised - Page 4 of 126
- (3) Revised - Material Summary - Pages 68-75 of 126
- (4) Revised - Proposal Bid Items - Pages 120-126 of 126
- (5) Revised - Plan Sheets -R2G, R2J, R2K, R71, R162,
S1A Title Sheet and S7A Foundation Layout Sheet

Proposal revisions are available at <http://transportation.ky.gov/Construction-Procurement/>.

If you have any questions, please contact us at 502-564-3500.

Sincerely,

A handwritten signature in black ink that reads "Rachel Mills".

Rachel Mills, P.E.
Director
Division of Construction Procurement

RM:mr
Enclosures



An Equal Opportunity Employer M/F/D



CALL NO. 200

CONTRACT ID. 181026

MCCREARY - WHITLEY COUNTIES

FED/STATE PROJECT NUMBER 121GR18D026-STP

DESCRIPTION PINE KNOT-WILLIAMSBURG ROAD(KY-92)

WORK TYPE GRADE, DRAIN & SURFACE WITH BRIDGE

PRIMARY COMPLETION DATE 3/31/2021

LETTING DATE: August 24,2018

Sealed Bids will be received electronically through the Bid Express bidding service until 10:00 AM EASTERN DAYLIGHT TIME August 24,2018. Bids will be publicly announced at 10:00 AM EASTERN DAYLIGHT TIME.

PLANS AVAILABLE FOR THIS PROJECT.

DBE CERTIFICATION REQUIRED - 9%

REQUIRED BID PROPOSAL GUARANTY: Not less than 5% of the total bid.

ADMINISTRATIVE DISTRICT - 08

CONTRACT ID - 181026

121GR18D026-STP

COUNTY - MCCREARY

PCN - DE07400921826

STP 5147(022)

PINE KNOTT-WILLIAMSBURG ROAD(KY-92) RECONSTRUCT KY-92 FROM 1450 FT. WEST OF KY-592 TO 350 FT. EAST OF THE WHITLEY-MCCREARY COUNTY LINE, A DISTANCE OF 04.14 MILES.GRADE, DRAIN & SURFACE WITH BRIDGE SYP NO. 08-00261.30.

GEOGRAPHIC COORDINATES LATITUDE 36:40:12.00 LONGITUDE 84:18:32.00

PCN - DE07400921827

STP 5147(023)

PINE KNOT-WILLIAMSBURG FOAD(KY-92) RECONSTRUCT KY-92 FROM 500 FT. WEST OF THE WHITLEY-McCREARY COUNTY LINE TO 1200 FT. EAST OF OLD JELICO CREEK ROADGRADE & DRAIN WITH INCIDENTAL SURF SYP NO. 11-00184.10.

GEOGRAPHIC COORDINATES LATITUDE 36:40:12.00 LONGITUDE 84:28:00.00

COUNTY - WHITLEY

PCN - DE11800921826

STP 5147(023)

PINE KNOTT-WILLIAMSBURG ROAD(KY-92) RECONSTRUCT KY-92 FROM 500 FT. WEST OF THE WHITLEY-McCREARY COUNTY LINE TO 1200 FT. EAST OF OLD JELICO CREEK ROAD, A DISTANCE OF 03.81 MILES.GRADE, DRAIN & SURFACE WITH BRIDGE SYP NO. 11-00184.10.

GEOGRAPHIC COORDINATES LATITUDE 36:40:12.00 LONGITUDE 84:18:31.00

COMPLETION DATE(S):

COMPLETED BY 03/31/2021

APPLIES TO ENTIRE CONTRACT

MATERIAL SUMMARY

CONTRACT ID: 181026

121GR18D026-STP

DE07400921826

PINE KNOTT-WILLIAMSBURG ROAD(KY-92) RECONSTRUCT KY-92 FROM 1450 FT. WEST OF KY-592 TO 350 FT. EAST OF THE WHITLEY-MCCREARY COUNTY LINE GRADE, DRAIN & SURFACE WITH BRIDGE, A DISTANCE OF 4.14 MILES.

Project Line No	Bid Code	DESCRIPTION	Quantity	Unit
0005	00003	CRUSHED STONE BASE	5,690.00	TON
0010	00020	TRAFFIC BOUND BASE	5,000.00	TON
0015	00100	ASPHALT SEAL AGGREGATE	28.00	TON
0020	00103	ASPHALT SEAL COAT	6.00	TON
0025	00212	CL2 ASPH BASE 1.00D PG64-22	1,269.00	TON
0030	00221	CL2 ASPH BASE 0.75D PG64-22	1,374.00	TON
0035	00301	CL2 ASPH SURF 0.38D PG64-22	226.00	TON
0040	00356	ASPHALT MATERIAL FOR TACK	5.00	TON
0045	00078	CRUSHED AGGREGATE SIZE NO 2	55.00	TON
0050	01000	PERFORATED PIPE-4 IN	7,310.00	LF
0055	01010	NON-PERFORATED PIPE-4 IN	3,447.00	LF
0060	01020	PERF PIPE HEADWALL TY 1-4 IN	13.00	EACH
0065	01024	PERF PIPE HEADWALL TY 2-4 IN	8.00	EACH
0070	01028	PERF PIPE HEADWALL TY 3-4 IN	20.00	EACH
0075	01032	PERF PIPE HEADWALL TY 4-4 IN	14.00	EACH
0080	01987	DELINEATOR FOR GUARDRAIL BI DIRECTIONAL WHITE	3.00	EACH
0085	02014	BARRICADE-TYPE III	34.00	EACH
0090	02091	REMOVE PAVEMENT	1,303.00	SQYD
0095	02159	TEMP DITCH	2,000.00	LF
0100	02200	ROADWAY EXCAVATION	3,111,998.00	CUYD
0105	02242	WATER	11.00	MGAL
0110	02351	GUARDRAIL-STEEL W BEAM-S FACE	250.00	LF
0115	02360	GUARDRAIL TERMINAL SECTION NO 1	5.00	EACH
0120	02391	GUARDRAIL END TREATMENT TYPE 4A	1.00	EACH
0125	02404	SEPTIC TANK TREATMENT	3.00	EACH
0130	02429	RIGHT-OF-WAY MONUMENT TYPE 1	168.00	EACH
0135	02432	WITNESS POST	158.00	EACH
0140	02475	PLUG WATER WELL	2.00	EACH
0145	02483	CHANNEL LINING CLASS II	5,297.00	TON
0150	02484	CHANNEL LINING CLASS III	10,350.00	TON
0155	02545	CLEARING AND GRUBBING - 248 ACRES	1.00	LS
0160	02555	CONCRETE-CLASS B	185.00	CUYD
0165	02562	TEMPORARY SIGNS	504.00	SQFT
0170	02585	EDGE KEY	37.00	LF
0175	02598	FABRIC-GEOTEXTILE TYPE III	130,168.00	SQYD
0180	02599	FABRIC-GEOTEXTILE TYPE IV	78,360.00	SQYD
0185	02600	FABRIC GEOTEXTILE TY IV FOR PIPE	10,826.00	SQYD
0190	02671	PORTABLE CHANGEABLE MESSAGE SIGN	4.00	EACH
0195	02692	SETTLEMENT PLATFORM	2.00	EACH
0200	02701	TEMP SILT FENCE	10,755.00	LF
0205	02703	SILT TRAP TYPE A	228.00	EACH
0210	02704	SILT TRAP TYPE B	228.00	EACH
0215	02705	SILT TRAP TYPE C	228.00	EACH

MATERIAL SUMMARY

Project Line No	Bid Code	DESCRIPTION	Quantity	Unit
0220	02706	CLEAN SILT TRAP TYPE A	228.00	EACH
0225	02707	CLEAN SILT TRAP TYPE B	228.00	EACH
0230	02708	CLEAN SILT TRAP TYPE C	228.00	EACH
0235	02711	SEDIMENTATION BASIN	7,992.00	CUYD
0240	03340	STEEL PIPE-2 1/2 IN	73.50	LF
0245	03343	STEEL PIPE-4 IN	73.50	LF
0250	05950	EROSION CONTROL BLANKET	17,533.00	SQYD
0255	05952	TEMP MULCH	734,924.00	SQYD
0260	05953	TEMP SEEDING AND PROTECTION	551,193.00	SQYD
0265	05963	INITIAL FERTILIZER	34.00	TON
0270	05964	20-10-10 FERTILIZER	57.00	TON
0275	05985	SEEDING AND PROTECTION	1,102,386.00	SQYD
0280	05992	AGRICULTURAL LIMESTONE	683.00	TON
0285	06510	PAVE STRIPING-TEMP PAINT-4 IN	5,380.00	LF
0290	06514	PAVE STRIPING-PERM PAINT-4 IN	9,908.00	LF
0295	06568	PAVE MARKING-THERMO STOP BAR-24IN	110.00	LF
0300	08019	CYCLOPEAN STONE RIP RAP	1,148.00	TON
0305	08100	CONCRETE-CLASS A	9.30	CUYD
0310	22768ED	SPECIAL SEEDING GRASS SWALES	230.00	SQYD
0320	10020NS	FUEL ADJUSTMENT	539,328.00	DOLL
0325	23274EN11F	TURF REINFORCEMENT MAT 1	2,009.00	SQYD
0330	24814EC	PIPELINE INSPECTION	4,948.00	LF
0335	00440	ENTRANCE PIPE-15 IN	113.00	LF
0340	00441	ENTRANCE PIPE-18 IN	316.00	LF
0345	00443	ENTRANCE PIPE-24 IN	276.00	LF
0350	00445	ENTRANCE PIPE-30 IN	32.00	LF
0355	00462	CULVERT PIPE-18 IN	1,316.00	LF
0360	00464	CULVERT PIPE-24 IN	621.00	LF
0365	00466	CULVERT PIPE-30 IN	950.00	LF
0370	00468	CULVERT PIPE-36 IN	450.00	LF
0375	00469	CULVERT PIPE-42 IN	158.00	LF
0380	00471	CULVERT PIPE-54 IN	1,083.00	LF
0385	00472	CULVERT PIPE-60 IN	160.00	LF
0390	00473	CULVERT PIPE-66 IN	101.00	LF
0395	00474	CULVERT PIPE-72 IN	121.00	LF
0400	01204	PIPE CULVERT HEADWALL-18 IN	18.00	EACH
0405	01208	PIPE CULVERT HEADWALL-24 IN	6.00	EACH
0410	01210	PIPE CULVERT HEADWALL-30 IN	10.00	EACH
0415	01212	PIPE CULVERT HEADWALL-36 IN	6.00	EACH
0420	01214	PIPE CULVERT HEADWALL-42 IN	2.00	EACH
0425	01220	PIPE CULVERT HEADWALL-60 IN	2.00	EACH
0430	01222	PIPE CULVERT HEADWALL-66 IN	2.00	EACH
0435	01450	S & F BOX INLET-OUTLET-18 IN	2.00	EACH
0440	01452	S & F BOX INLET-OUTLET-30 IN	2.00	EACH
0445	01480	CURB BOX INLET TYPE B	3.00	EACH
0450	03389	PVC PIPE-10 IN	78.00	LF
0455	20166ES810	TEMPORARY PIPE - (REVISED: 8-22-18)	74.00	LF
0460	24025EC	PIPE CULVERT HEADWALL-72 IN	2.00	EACH
0465	24026EC	PIPE CULVERT HEADWALL-54 IN	4.00	EACH
0470	08100	CONCRETE-CLASS A	145.00	CUYD

MATERIAL SUMMARY

Project Line No	Bid Code	DESCRIPTION	Quantity	Unit
0475	08150	STEEL REINFORCEMENT	13,095.00	LB
0480	08003	FOUNDATION PREPARATION	1.00	LS
0485	08002	STRUCTURE EXCAV-SOLID ROCK	33.00	CUYD
0490	08100	CONCRETE-CLASS A	266.70	CUYD
0495	08104	CONCRETE-CLASS AA	489.70	CUYD
0500	08150	STEEL REINFORCEMENT	43,785.00	LB
0505	08151	STEEL REINFORCEMENT-EPOXY COATED	163,421.00	LB
0510	08019	CYCLOPEAN STONE RIP RAP	473.00	TON
0515	02231	STRUCTURE GRANULAR BACKFILL	408.00	CUYD
0520	02998	MASONRY COATING	766.00	SQYD
0525	08046	PILES-STEEL HP12X53	822.00	LF
0530	08039	PRE-DRILLING FOR PILES	90.00	LF
0535	08094	PILE POINTS-12 IN	39.00	EACH
0540	03299	ARMORED EDGE FOR CONCRETE	125.40	LF
0545	08634	PRECAST PC I BEAM TYPE 4	1,396.70	LF
0550	21532ED	RAIL SYSTEM TYPE III	568.00	LF
0555	08001	STRUCTURE EXCAVATION-COMMON	141.00	CUYD
0560	08002	STRUCTURE EXCAV-SOLID ROCK	312.00	CUYD
0565	08100	CONCRETE-CLASS A	368.00	CUYD
0570	08104	CONCRETE-CLASS AA	763.00	CUYD
0575	08150	STEEL REINFORCEMENT	49,751.00	LB
0580	08151	STEEL REINFORCEMENT-EPOXY COATED	262,980.00	LB
0585	08019	CYCLOPEAN STONE RIP RAP	1,200.00	TON
0590	02231	STRUCTURE GRANULAR BACKFILL	326.00	CUYD
0595	02998	MASONRY COATING	1,165.00	SQYD
0600	08046	PILES-STEEL HP12X53	1,444.00	LF
0605	08033	TEST PILES	149.00	LF
0610	08094	PILE POINTS-12 IN - (REVISED: 8-22-18)	102.00	EACH
0615	03299	ARMORED EDGE FOR CONCRETE	96.00	LF
0620	08634	PRECAST PC I BEAM TYPE 4	2,394.00	LF
0625	21532ED	RAIL SYSTEM TYPE III	966.00	LF
0630	08001	STRUCTURE EXCAVATION-COMMON	326.00	CUYD
0635	08500	APPROACH SLAB	266.00	SQYD
0640	08160	STRUCTURAL STEEL - 125 LB	1.00	LS
0645	02568	MOBILIZATION	1.00	LS
0650	02569	DEMOBILIZATION	1.00	LS
0655	02742	TRAINEE PAYMENT REIMBURSEMENT - (1-GROUP 2, 3 OR 4 OPERATOR)	1,400.00	HOUR
0660	02650	MAINTAIN & CONTROL TRAFFIC - (MCCREARY 8-261.3) (REVISED: 8-22-18)	1.00	LS
0665	02726	STAKING - (MCCREARY 8-261.3) (REVISED: 8-22-18)	1.00	LS

CONTRACT ID: 181026

121GR18D026-STP

DE07400921827

PINE KNOT-WILLIAMSBURG FOAD(KY-92) RECONSTRUCT KY-92 FROM 500 FT. WEST OF THE WHITLEY-McCREARY COUNTY LINE TO 1200 FT. EAST OF OLD JELICO CREEK ROAD GRADE & DRAIN WITH INCIDENTAL SURF.

MATERIAL SUMMARY

Project Line No	Bid Code	DESCRIPTION	Quantity	Unit
1525	00003	CRUSHED STONE BASE	981.00	TON
1530	00100	ASPHALT SEAL AGGREGATE	12.00	TON
1535	00103	ASPHALT SEAL COAT	2.00	TON
1540	00212	CL2 ASPH BASE 1.00D PG64-22	124.00	TON
1545	00221	CL2 ASPH BASE 0.75D PG64-22	116.00	TON
1550	00301	CL2 ASPH SURF 0.38D PG64-22	109.00	TON
1555	00356	ASPHALT MATERIAL FOR TACK	1.00	TON
1560	01987	DELINEATOR FOR GUARDRAIL BI DIRECTIONAL WHITE	4.00	EACH
1565	02200	ROADWAY EXCAVATION	23,654.00	CUYD
1570	02242	WATER	5.00	MGAL
1575	02351	GUARDRAIL-STEEL W BEAM-S FACE	212.50	LF
1580	02391	GUARDRAIL END TREATMENT TYPE 4A	1.00	EACH
1585	02545	CLEARING AND GRUBBING - (APPROX. 8 ACRES)	1.00	LS
1590	02562	TEMPORARY SIGNS	36.00	SQFT
1595	02585	EDGE KEY	20.00	LF
1600	02598	FABRIC-GEOTEXTILE TYPE III	2,238.00	SQYD
1605	02600	FABRIC GEOTEXTILE TY IV FOR PIPE	93.00	SQYD
1610	02671	PORTABLE CHANGEABLE MESSAGE SIGN	1.00	EACH
1615	02701	TEMP SILT FENCE	400.00	LF
1620	02703	SILT TRAP TYPE A	7.00	EACH
1625	02704	SILT TRAP TYPE B	7.00	EACH
1630	02705	SILT TRAP TYPE C	1.00	EACH
1635	02706	CLEAN SILT TRAP TYPE A	7.00	EACH
1640	02707	CLEAN SILT TRAP TYPE B	7.00	EACH
1645	02708	CLEAN SILT TRAP TYPE C	1.00	EACH
1650	05950	EROSION CONTROL BLANKET	203.00	SQYD
1655	05952	TEMP MULCH	47,044.00	SQYD
1660	05953	TEMP SEEDING AND PROTECTION	23,522.00	SQYD
1665	05963	INITIAL FERTILIZER	1.00	TON
1670	05964	20-10-10 FERTILIZER	2.00	TON
1675	05985	SEEDING AND PROTECTION	48,644.00	SQYD
1680	05992	AGRICULTURAL LIMESTONE	24.00	TON
1685	06510	PAVE STRIPING-TEMP PAINT-4 IN	1,715.00	LF
1690	06514	PAVE STRIPING-PERM PAINT-4 IN	1,715.00	LF
1695	06588	PAVEMENT MARKER TY IVA-BY TEMP	7.00	EACH
1700	10030NS	ASPHALT ADJUSTMENT	4,568.00	DOLL
1705	08100	CONCRETE-CLASS A	1.13	CUYD
1710	10020NS	FUEL ADJUSTMENT	19,242.00	DOLL
1715	24814EC	PIPELINE INSPECTION	60.00	LF
1720	00462	CULVERT PIPE-18 IN	60.00	LF
1725	01204	PIPE CULVERT HEADWALL-18 IN	1.00	EACH
1730	02568	MOBILIZATION	1.00	LS
1735	02569	DEMOBILIZATION	1.00	LS
1740	02650	MAINTAIN & CONTROL TRAFFIC - (MCCREARY 11-184.1) (REVISED: 8-22-18)	1.00	LS
1745	02726	STAKING - (MCCREARY 11-184.1) (REVISED: 8-22-18)	1.00	LS

MATERIAL SUMMARY

CONTRACT ID: 181026

121GR18D026-STP

DE11800921826

PINE KNOTT-WILLIAMSBURG ROAD(KY-92) RECONSTRUCT KY-92 FROM 500 FT. WEST OF THE WHITLEY-McCREARY COUNTY LINE TO 1200 FT. EAST OF OLD JELICO CREEK ROAD GRADE, DRAIN & SURFACE WITH BRIDGE, A DISTANCE OF 3.81 MILES.

Project Line No	Bid Code	DESCRIPTION	Quantity	Unit
0670	00003	CRUSHED STONE BASE	55,746.00	TON
0675	00020	TRAFFIC BOUND BASE	5,000.00	TON
0680	00100	ASPHALT SEAL AGGREGATE	680.00	TON
0685	00103	ASPHALT SEAL COAT	90.00	TON
0690	00212	CL2 ASPH BASE 1.00D PG64-22	9,859.00	TON
0695	00221	CL2 ASPH BASE 0.75D PG64-22	9,138.00	TON
0700	00301	CL2 ASPH SURF 0.38D PG64-22	128.00	TON
0705	00356	ASPHALT MATERIAL FOR TACK	26.00	TON
0710	00078	CRUSHED AGGREGATE SIZE NO 2	36.00	TON
0715	01000	PERFORATED PIPE-4 IN	3,486.00	LF
0720	01002	PERFORATED PIPE-8 IN	2,127.00	LF
0725	01010	NON-PERFORATED PIPE-4 IN	1,697.00	LF
0730	01012	NON-PERFORATED PIPE-8 IN	264.00	LF
0735	01020	PERF PIPE HEADWALL TY 1-4 IN	7.00	EACH
0740	01024	PERF PIPE HEADWALL TY 2-4 IN	3.00	EACH
0745	01028	PERF PIPE HEADWALL TY 3-4 IN	16.00	EACH
0750	01032	PERF PIPE HEADWALL TY 4-4 IN	9.00	EACH
0755	01034	PERF PIPE HEADWALL TY 4-8 IN	26.00	EACH
0760	01740	CORED HOLE DRAINAGE BOX CON-4 IN	3.00	EACH
0765	01891	ISLAND HEADER CURB TYPE 2	261.25	LF
0770	01984	DELINEATOR FOR BARRIER - WHITE	500.00	EACH
0775	01987	DELINEATOR FOR GUARDRAIL BI DIRECTIONAL WHITE	127.00	EACH
0780	02003	RELOCATE TEMP CONC BARRIER	5,000.00	LF
0785	02014	BARRICADE-TYPE III	20.00	EACH
0790	02091	REMOVE PAVEMENT	7,829.00	SQYD
0795	02159	TEMP DITCH	10,019.00	LF
0800	02200	ROADWAY EXCAVATION	1,541,598.00	CUYD
0805	02242	WATER	95.00	MGAL
0810	02351	GUARDRAIL-STEEL W BEAM-S FACE	7,987.50	LF
0815	02360	GUARDRAIL TERMINAL SECTION NO 1	15.00	EACH
0820	02363	GUARDRAIL CONNECTOR TO BRIDGE END TY A	12.00	EACH
0825	02381	REMOVE GUARDRAIL	575.00	LF
0830	02391	GUARDRAIL END TREATMENT TYPE 4A	10.00	EACH
0835	02404	SEPTIC TANK TREATMENT	9.00	EACH
0840	02429	RIGHT-OF-WAY MONUMENT TYPE 1 - (REVISED: 8-22-18)	145.00	EACH
0845	02432	WITNESS POST	135.00	EACH
0850	02475	PLUG WATER WELL	3.00	EACH
0855	02483	CHANNEL LINING CLASS II	1,513.00	TON
0860	02484	CHANNEL LINING CLASS III	9,321.00	TON
0865	02545	CLEARING AND GRUBBING - APPROX. 154 ACRES	1.00	LS
0870	02555	CONCRETE-CLASS B	222.00	CUYD
0875	02562	TEMPORARY SIGNS	1,406.00	SQFT
0880	02585	EDGE KEY	122.00	LF
0885	02598	FABRIC-GEOTEXTILE TYPE III	144,463.00	SQYD

MATERIAL SUMMARY

Project Line No	Bid Code	DESCRIPTION	Quantity	Unit
0890	02600	FABRIC GEOTEXTILE TY IV FOR PIPE	7,133.00	SQYD
0895	02651	DIVERSIONS (BY-PASS DETOURS) - DIVERSION #1 - CAMPBELL RD	1.00	LS
0900	02651	DIVERSIONS (BY-PASS DETOURS) - DIVERSION #2 - JELICO CREEK CHURCH RD	1.00	LS
0905	02651	DIVERSIONS (BY-PASS DETOURS) - DIVERSION #3 - FRONTAGE RD	1.00	LS
0910	02651	DIVERSIONS (BY-PASS DETOURS) - DIVERSION #4 - TEMP KY 92 CONNECTOR	1.00	LS
0915	02671	PORTABLE CHANGEABLE MESSAGE SIGN	3.00	EACH
0920	02692	SETTLEMENT PLATFORM	3.00	EACH
0925	02701	TEMP SILT FENCE	9,619.00	LF
0930	02703	SILT TRAP TYPE A	155.00	EACH
0935	02704	SILT TRAP TYPE B	155.00	EACH
0940	02705	SILT TRAP TYPE C	30.00	EACH
0945	02706	CLEAN SILT TRAP TYPE A	155.00	EACH
0950	02707	CLEAN SILT TRAP TYPE B	155.00	EACH
0955	02708	CLEAN SILT TRAP TYPE C	30.00	EACH
0960	02731	REMOVE STRUCTURE - KY 92 OVER PLEASANT RUN CR. 150+60	1.00	LS
0965	02731	REMOVE STRUCTURE - KY 92 OVER PLEASANT RUN CR. 217+50	1.00	LS
0970	02731	REMOVE STRUCTURE - KY 92 OVER JELICO CR. 294+50	1.00	LS
0975	02731	REMOVE STRUCTURE - 5 X 3 RCBC STA. 172+95	1.00	LS
0980	02731	REMOVE STRUCTURE - 2.5 X 2.5 RCBC STA. 177+30	1.00	LS
0985	02731	REMOVE STRUCTURE - 3 X 3 RCBC STA. 188+55	1.00	LS
0990	02731	REMOVE STRUCTURE - 4 X 3 RCBC STA. 208+76	1.00	LS
0995	02731	REMOVE STRUCTURE - 3 X 3 RCBC STA. 227+50	1.00	LS
1000	02731	REMOVE STRUCTURE - 2.5 X 2.5 RCBC STA. 230+30	1.00	LS
1005	02731	REMOVE STRUCTURE - 2.5 X 2.5 RCBC STA. 243+45	1.00	LS
1010	02731	REMOVE STRUCTURE - 3 X 3 RCBC STA. 107+15 FRONTAGE D	1.00	LS
1015	02731	REMOVE STRUCTURE - DBL 8 X 5 RCBC STA. 49+10 FRONT RD CONN	1.00	LS
1020	02898	RELOCATE CRASH CUSHION	2.00	EACH
1025	03171	CONCRETE BARRIER WALL TYPE 9T	5,000.00	LF
1030	03340	STEEL PIPE-2 1/2 IN	89.25	LF
1035	03343	STEEL PIPE-4 IN	89.25	LF
1040	05950	EROSION CONTROL BLANKET	73,761.00	SQYD
1045	05992	AGRICULTURAL LIMESTONE	462.00	TON
1050	05952	TEMP MULCH	736,036.00	SQYD
1055	05953	TEMP SEEDING AND PROTECTION	368,518.00	SQYD
1060	05963	INITIAL FERTILIZER	23.00	TON
1065	05964	20-10-10 FERTILIZER	39.00	TON
1070	05985	SEEDING AND PROTECTION	761,036.00	SQYD
1075	06510	PAVE STRIPING-TEMP PAINT-4 IN	73,364.00	LF
1080	06514	PAVE STRIPING-PERM PAINT-4 IN	73,364.00	LF
1085	06550	PAVE STRIPING-TEMP REM TAPE-W	2,522.00	LF
1090	06551	PAVE STRIPING-TEMP REM TAPE-Y	2,522.00	LF
1095	06568	PAVE MARKING-THERMO STOP BAR-24IN	120.00	LF
1100	06569	PAVE MARKING-THERMO CROSS-HATCH	9,514.00	SQFT

MATERIAL SUMMARY

Project Line No	Bid Code	DESCRIPTION	Quantity	Unit
1105	06574	PAVE MARKING-THERMO CURV ARROW	18.00	EACH
1110	06588	PAVEMENT MARKER TY IVA-BY TEMP	71.00	EACH
1115	08019	CYCLOPEAN STONE RIP RAP	7,872.00	TON
1120	08901	CRASH CUSHION TY VI CLASS BT TL2	2.00	EACH
1125	20667ED	PNEUMATIC BACKSTOWING	72.00	TON
1130	10030NS	ASPHALT ADJUSTMENT	71,568.00	DOLL
1135	10020NS	FUEL ADJUSTMENT	301,467.00	DOLL
1140	24814EC	PIPELINE INSPECTION	3,415.00	LF
1145	00440	ENTRANCE PIPE-15 IN	389.00	LF
1150	00441	ENTRANCE PIPE-18 IN	214.00	LF
1155	00443	ENTRANCE PIPE-24 IN	422.00	LF
1160	00462	CULVERT PIPE-18 IN	751.00	LF
1165	00464	CULVERT PIPE-24 IN	423.00	LF
1170	00466	CULVERT PIPE-30 IN	444.00	LF
1175	00468	CULVERT PIPE-36 IN	1,076.00	LF
1180	00469	CULVERT PIPE-42 IN	77.00	LF
1185	00470	CULVERT PIPE-48 IN	521.00	LF
1190	00471	CULVERT PIPE-54 IN	123.00	LF
1195	01204	PIPE CULVERT HEADWALL-18 IN	14.00	EACH
1200	01208	PIPE CULVERT HEADWALL-24 IN	6.00	EACH
1205	01210	PIPE CULVERT HEADWALL-30 IN	7.00	EACH
1210	01212	PIPE CULVERT HEADWALL-36 IN	10.00	EACH
1215	01214	PIPE CULVERT HEADWALL-42 IN	2.00	EACH
1220	01216	PIPE CULVERT HEADWALL-48 IN	8.00	EACH
1225	01450	S & F BOX INLET-OUTLET-18 IN	3.00	EACH
1230	01451	S & F BOX INLET-OUTLET-24 IN	2.00	EACH
1235	01452	S & F BOX INLET-OUTLET-30 IN	1.00	EACH
1240	01480	CURB BOX INLET TYPE B	5.00	EACH
1245	24026EC	PIPE CULVERT HEADWALL-54 IN	2.00	EACH
1250	08100	CONCRETE-CLASS A	192.60	CUYD
1255	08104	CONCRETE-CLASS AA	443.40	CUYD
1260	08150	STEEL REINFORCEMENT	28,829.00	LB
1265	08151	STEEL REINFORCEMENT-EPOXY COATED	134,232.00	LB
1270	22417EN	DRILLED SHAFT-54 IN-COMMON	82.00	LF
1275	03299	ARMORED EDGE FOR CONCRETE	138.90	LF
1280	08019	CYCLOPEAN STONE RIP RAP	412.00	TON
1285	02998	MASONRY COATING	1,112.00	SQYD
1290	08046	PILES-STEEL HP12X53	616.00	LF
1295	08094	PILE POINTS-12 IN	22.00	EACH
1300	20637ED	DRILLED SHAFT-ROCK 48 IN	72.00	LF
1305	08633	PRECAST PC I BEAM TYPE 3	1,235.10	LF
1310	21532ED	RAIL SYSTEM TYPE III	420.00	LF
1315	02231	STRUCTURE GRANULAR BACKFILL	283.00	CUYD
1320	21084ED	SOUNDINGS	82.00	LF
1325	20746ED	ROCK CORINGS	132.00	LF
1330	08100	CONCRETE-CLASS A	249.50	CUYD
1335	08104	CONCRETE-CLASS AA	299.20	CUYD
1340	08150	STEEL REINFORCEMENT	33,642.00	LB
1345	08151	STEEL REINFORCEMENT-EPOXY COATED	84,225.00	LB
1350	08001	STRUCTURE EXCAVATION-COMMON	119.00	CUYD

MATERIAL SUMMARY

Project Line No	Bid Code	DESCRIPTION	Quantity	Unit
1355	03299	ARMORED EDGE FOR CONCRETE	136.00	LF
1360	08019	CYCLOPEAN STONE RIP RAP	899.00	TON
1365	02998	MASONRY COATING	869.00	SQYD
1370	08046	PILES-STEEL HP12X53	403.00	LF
1375	08094	PILE POINTS-12 IN	18.00	EACH
1380	08002	STRUCTURE EXCAV-SOLID ROCK	161.00	CUYD
1385	08632	PRECAST PC I BEAM TYPE 2	802.10	LF
1390	21532ED	RAIL SYSTEM TYPE III	330.00	LF
1395	02231	STRUCTURE GRANULAR BACKFILL	196.00	CUYD
1400	08100	CONCRETE-CLASS A	1,856.70	CUYD
1405	08104	CONCRETE-CLASS AA	1,316.30	CUYD
1410	08150	STEEL REINFORCEMENT	306,597.00	LB
1415	08151	STEEL REINFORCEMENT-EPOXY COATED	373,108.00	LB
1420	08001	STRUCTURE EXCAVATION-COMMON	1,456.00	CUYD
1425	08002	STRUCTURE EXCAV-SOLID ROCK	1,078.00	CUYD
1430	08019	CYCLOPEAN STONE RIP RAP	2,876.00	TON
1435	02998	MASONRY COATING	1,902.00	SQYD
1440	08046	PILES-STEEL HP12X53	3,449.00	LF
1445	08094	PILE POINTS-12 IN	48.00	EACH
1450	08472	EXPANSION DAM-4 IN NEOPRENE	102.00	LF
1455	24582EN	PRECAST PC I BEAM-HN 72-49	3,640.00	LF
1460	21532ED	RAIL SYSTEM TYPE III	1,542.00	LF
1465	02231	STRUCTURE GRANULAR BACKFILL	505.00	CUYD
1470	08160	STRUCTURAL STEEL - 1200 LB	1.00	LS
1475	08100	CONCRETE-CLASS A	184.30	CUYD
1480	08150	STEEL REINFORCEMENT	26,325.00	LB
1485	08003	FOUNDATION PREPARATION	1.00	LS
1490	08002	STRUCTURE EXCAV-SOLID ROCK	965.00	CUYD
1495	02568	MOBILIZATION	1.00	LS
1500	02569	DEMOBILIZATION	1.00	LS
1505	02690	SAFELOADING - (ADDED: 8-22-18)	24.00	CUYD
1510	20166ES810	TEMPORARY PIPE - (REVISED: 8-22-18)	58.00	LF
1515	02650	MAINTAIN & CONTROL TRAFFIC - (WHITLEY 11-184.1) (REVISED: 8-22-18)	1.00	LS
1520	02726	STAKING - (WHITLEY 11-184.1) (REVISED: 8-22-18)	1.00	LS

PROPOSAL BID ITEMS

181026

Page 1 of 7

Report Date 8/22/18

Section: 0001 - PAVING

LINE	BID CODE	ALT	DESCRIPTION	QUANTITY	UNIT	UNIT PRIC	FP	AMOUNT
0010	00003		CRUSHED STONE BASE	62,417.00	TON		\$	
0020	00020		TRAFFIC BOUND BASE	10,000.00	TON		\$	
0030	00100		ASPHALT SEAL AGGREGATE	720.00	TON		\$	
0040	00103		ASPHALT SEAL COAT	98.00	TON		\$	
0050	00212		CL2 ASPH BASE 1.00D PG64-22	11,252.00	TON		\$	
0060	00221		CL2 ASPH BASE 0.75D PG64-22	10,628.00	TON		\$	
0070	00301		CL2 ASPH SURF 0.38D PG64-22	463.00	TON		\$	
0080	00356		ASPHALT MATERIAL FOR TACK	32.00	TON		\$	

Section: 0002 - ROADWAY

LINE	BID CODE	ALT	DESCRIPTION	QUANTITY	UNIT	UNIT PRIC	FP	AMOUNT
0090	00078		CRUSHED AGGREGATE SIZE NO 2	91.00	TON		\$	
0100	01000		PERFORATED PIPE-4 IN	10,796.00	LF		\$	
0110	01002		PERFORATED PIPE-8 IN	2,127.00	LF		\$	
0120	01010		NON-PERFORATED PIPE-4 IN	5,144.00	LF		\$	
0130	01012		NON-PERFORATED PIPE-8 IN	264.00	LF		\$	
0140	01020		PERF PIPE HEADWALL TY 1-4 IN	20.00	EACH		\$	
0150	01024		PERF PIPE HEADWALL TY 2-4 IN	11.00	EACH		\$	
0160	01028		PERF PIPE HEADWALL TY 3-4 IN	36.00	EACH		\$	
0170	01032		PERF PIPE HEADWALL TY 4-4 IN	23.00	EACH		\$	
0180	01034		PERF PIPE HEADWALL TY 4-8 IN	26.00	EACH		\$	
0190	01740		CORED HOLE DRAINAGE BOX CON-4 IN	3.00	EACH		\$	
0200	01891		ISLAND HEADER CURB TYPE 2	261.25	LF		\$	
0210	01984		DELINEATOR FOR BARRIER - WHITE	500.00	EACH		\$	
0220	01987		DELINEATOR FOR GUARDRAIL BI DIRECTIONAL WHITE	134.00	EACH		\$	
0230	02003		RELOCATE TEMP CONC BARRIER	5,000.00	LF		\$	
0240	02014		BARRICADE-TYPE III	54.00	EACH		\$	
0250	02091		REMOVE PAVEMENT	9,132.00	SQYD		\$	
0260	02159		TEMP DITCH	12,019.00	LF		\$	
0270	02200		ROADWAY EXCAVATION	4,677,250.00	CUYD		\$	
0280	02242		WATER	111.00	MGAL		\$	
0290	02351		GUARDRAIL-STEEL W BEAM-S FACE	8,450.00	LF		\$	
0300	02360		GUARDRAIL TERMINAL SECTION NO 1	20.00	EACH		\$	
0310	02363		GUARDRAIL CONNECTOR TO BRIDGE END TY A	12.00	EACH		\$	
0320	02381		REMOVE GUARDRAIL	575.00	LF		\$	
0330	02391		GUARDRAIL END TREATMENT TYPE 4A	12.00	EACH		\$	
0340	02404		SEPTIC TANK TREATMENT	12.00	EACH		\$	
0350	02429		RIGHT-OF-WAY MONUMENT TYPE 1	313.00	EACH		\$	
0360	02432		WITNESS POST	293.00	EACH		\$	
0370	02475		PLUG WATER WELL	5.00	EACH		\$	
0380	02483		CHANNEL LINING CLASS II	6,810.00	TON		\$	
0390	02484		CHANNEL LINING CLASS III	19,671.00	TON		\$	
0400	02545		CLEARING AND GRUBBING (APPROX. 8 ACRES)	1.00	LS		\$	

PROPOSAL BID ITEMS

181026

Page 2 of 7

Report Date 8/22/18

LINE	BID CODE	ALT	DESCRIPTION	QUANTITY	UNIT	UNIT PRIC	FP	AMOUNT
0410	02545		CLEARING AND GRUBBING 248 ACRES	1.00	LS		\$	
0420	02545		CLEARING AND GRUBBING APPROX. 154 ACRES	1.00	LS		\$	
0430	02555		CONCRETE-CLASS B	407.00	CUYD		\$	
0440	02562		TEMPORARY SIGNS	1,946.00	SQFT		\$	
0450	02585		EDGE KEY	179.00	LF		\$	
0470	02598		FABRIC-GEOTEXTILE TYPE III	276,869.00	SQYD		\$	
0480	02599		FABRIC-GEOTEXTILE TYPE IV	78,360.00	SQYD		\$	
0490	02600		FABRIC GEOTEXTILE TY IV FOR PIPE	18,052.00	SQYD	\$2.00	\$	\$36,104.00
0500	02650		MAINTAIN & CONTROL TRAFFIC (MCCREARY 8-261.3) (REVISED: 8-22-18)	1.00	LS		\$	
0501	02650		MAINTAIN & CONTROL TRAFFIC (MCCREARY 11-184.1) (REVISED: 8-22-18)	1.00	LS		\$	
0502	02650		MAINTAIN & CONTROL TRAFFIC (WHITLEY 11-184.1) (REVISED: 8-22-18)	1.00	LS		\$	
0510	02651		DIVERSIONS (BY-PASS DETOURS) DIVERSION #1 - CAMPBELL RD	1.00	LS		\$	
0520	02651		DIVERSIONS (BY-PASS DETOURS) DIVERSION #2 - JELICO CREEK CHURCH RD	1.00	LS		\$	
0530	02651		DIVERSIONS (BY-PASS DETOURS) DIVERSION #3 - FRONTAGE RD	1.00	LS		\$	
0540	02651		DIVERSIONS (BY-PASS DETOURS) DIVERSION #4 - TEMP KY 92 CONNECTOR	1.00	LS		\$	
0550	02671		PORTABLE CHANGEABLE MESSAGE SIGN	8.00	EACH		\$	
0560	02692		SETTLEMENT PLATFORM	5.00	EACH		\$	
0570	02701		TEMP SILT FENCE	20,774.00	LF		\$	
0580	02703		SILT TRAP TYPE A	390.00	EACH		\$	
0590	02704		SILT TRAP TYPE B	390.00	EACH		\$	
0600	02705		SILT TRAP TYPE C	259.00	EACH		\$	
0610	02706		CLEAN SILT TRAP TYPE A	390.00	EACH		\$	
0620	02707		CLEAN SILT TRAP TYPE B	390.00	EACH		\$	
0630	02708		CLEAN SILT TRAP TYPE C	259.00	EACH		\$	
0640	02711		SEDIMENTATION BASIN	7,992.00	CUYD		\$	
0650	02726		STAKING (MCCREARY 8-261.3) (REVISED: 8-22-18)	1.00	LS		\$	
0651	02726		STAKING (MCCREARY 11-184.1) (REVISED: 8-22-18)	1.00	LS		\$	
0652	02726		STAKING (WHITLEY 11-184.1) (REVISED: 8-22-18)	1.00	LS		\$	
0660	02731		REMOVE STRUCTURE 2.5 X 2.5 RCBC STA. 177+30	1.00	LS		\$	
0670	02731		REMOVE STRUCTURE 2.5 X 2.5 RCBC STA. 230+30	1.00	LS		\$	
0680	02731		REMOVE STRUCTURE KY 92 OVER PLEASANT RUN CR. 150+60	1.00	LS		\$	
0690	02731		REMOVE STRUCTURE 2.5 X 2.5 RCBC STA. 243+45	1.00	LS		\$	

PROPOSAL BID ITEMS

181026

Page 3 of 7

Report Date 8/22/18

LINE	BID CODE	ALT	DESCRIPTION	QUANTITY	UNIT	UNIT PRIC	FP	AMOUNT
0700	02731		REMOVE STRUCTURE 3 X 3 RCBC STA. 107+15 FRONTAGE D	1.00	LS		\$	
0710	02731		REMOVE STRUCTURE 3 X 3 RCBC STA. 188+55	1.00	LS		\$	
0720	02731		REMOVE STRUCTURE 3 X 3 RCBC STA. 227+50	1.00	LS		\$	
0730	02731		REMOVE STRUCTURE 4 X 3 RCBC STA. 208+76	1.00	LS		\$	
0740	02731		REMOVE STRUCTURE 5 X 3 RCBC STA. 172+95	1.00	LS		\$	
0750	02731		REMOVE STRUCTURE DBL 8 X 5 RCBC STA. 49+10 FRONT RD CONN	1.00	LS		\$	
0760	02731		REMOVE STRUCTURE KY 92 OVER JELLICO CR. 294+50	1.00	LS		\$	
0770	02731		REMOVE STRUCTURE KY 92 OVER PLEASANT RUN CR. 217+50	1.00	LS		\$	
0780	02898		RELOCATE CRASH CUSHION	2.00	EACH		\$	
0790	03171		CONCRETE BARRIER WALL TYPE 9T	5,000.00	LF		\$	
0800	03340		STEEL PIPE-2 1/2 IN	162.75	LF		\$	
0810	03343		STEEL PIPE-4 IN	162.75	LF		\$	
0820	05950		EROSION CONTROL BLANKET	91,497.00	SQYD		\$	
0830	05952		TEMP MULCH	1,518,004.00	SQYD		\$	
0840	05953		TEMP SEEDING AND PROTECTION	943,233.00	SQYD		\$	
0850	05963		INITIAL FERTILIZER	58.00	TON		\$	
0860	05964		20-10-10 FERTILIZER	98.00	TON		\$	
0870	05985		SEEDING AND PROTECTION	1,912,066.00	SQYD		\$	
0880	05992		AGRICULTURAL LIMESTONE	1,169.00	TON		\$	
0890	06510		PAVE STRIPING-TEMP PAINT-4 IN	80,459.00	LF		\$	
0900	06514		PAVE STRIPING-PERM PAINT-4 IN	84,987.00	LF		\$	
0910	06550		PAVE STRIPING-TEMP REM TAPE-W	2,522.00	LF		\$	
0920	06551		PAVE STRIPING-TEMP REM TAPE-Y	2,522.00	LF		\$	
0930	06568		PAVE MARKING-THERMO STOP BAR-24IN	230.00	LF		\$	
0940	06569		PAVE MARKING-THERMO CROSS-HATCH	9,514.00	SQFT		\$	
0950	06574		PAVE MARKING-THERMO CURV ARROW	18.00	EACH		\$	
0960	06588		PAVEMENT MARKER TY IVA-BY TEMP	78.00	EACH		\$	
0970	08019		CYCLOPEAN STONE RIP RAP	9,020.00	TON		\$	
0980	08100		CONCRETE-CLASS A	10.43	CUYD		\$	
0990	08901		CRASH CUSHION TY VI CLASS BT TL2	2.00	EACH		\$	
1000	10020NS		FUEL ADJUSTMENT	860,037.00	DOLL	\$1.00	\$	\$860,037.00
1010	10030NS		ASPHALT ADJUSTMENT	76,136.00	DOLL	\$1.00	\$	\$76,136.00
1020	20667ED		PNEUMATIC BACKSTOWING	72.00	TON		\$	
1030	22768ED		SPECIAL SEEDING GRASS SWALES	230.00	SQYD		\$	
1050	23274EN11F		TURF REINFORCEMENT MAT 1	2,009.00	SQYD		\$	
1060	24814EC		PIPELINE INSPECTION	8,423.00	LF		\$	

Section: 0003 - DRAINAGE

LINE	BID CODE	ALT	DESCRIPTION	QUANTITY	UNIT	UNIT PRIC	FP	AMOUNT
1070	00440		ENTRANCE PIPE-15 IN	502.00	LF		\$	
1080	00441		ENTRANCE PIPE-18 IN	530.00	LF		\$	

PROPOSAL BID ITEMS

REVISED ADDENDUM #1: 8-22-18

181026

Page 4 of 7

Report Date 8/22/18

LINE	BID CODE	ALT	DESCRIPTION	QUANTITY	UNIT	UNIT PRIC	FP	AMOUNT
1090	00443		ENTRANCE PIPE-24 IN	698.00	LF		\$	
1100	00445		ENTRANCE PIPE-30 IN	32.00	LF		\$	
1110	00462		CULVERT PIPE-18 IN	2,127.00	LF		\$	
1120	00464		CULVERT PIPE-24 IN	1,044.00	LF		\$	
1130	00466		CULVERT PIPE-30 IN	1,394.00	LF		\$	
1140	00468		CULVERT PIPE-36 IN	1,526.00	LF		\$	
1150	00469		CULVERT PIPE-42 IN	235.00	LF		\$	
1160	00470		CULVERT PIPE-48 IN	521.00	LF		\$	
1170	00471		CULVERT PIPE-54 IN	1,206.00	LF		\$	
1180	00472		CULVERT PIPE-60 IN	160.00	LF		\$	
1190	00473		CULVERT PIPE-66 IN	101.00	LF		\$	
1200	00474		CULVERT PIPE-72 IN	121.00	LF		\$	
1210	01204		PIPE CULVERT HEADWALL-18 IN	18.00	EACH		\$	
1220	01204		PIPE CULVERT HEADWALL-18 IN	14.00	EACH		\$	
1230	01204		PIPE CULVERT HEADWALL-18 IN	1.00	EACH		\$	
1240	01208		PIPE CULVERT HEADWALL-24 IN	6.00	EACH		\$	
1250	01208		PIPE CULVERT HEADWALL-24 IN	6.00	EACH		\$	
1260	01210		PIPE CULVERT HEADWALL-30 IN	10.00	EACH		\$	
1270	01210		PIPE CULVERT HEADWALL-30 IN	7.00	EACH		\$	
1280	01212		PIPE CULVERT HEADWALL-36 IN	6.00	EACH		\$	
1290	01212		PIPE CULVERT HEADWALL-36 IN	10.00	EACH		\$	
1300	01214		PIPE CULVERT HEADWALL-42 IN	2.00	EACH		\$	
1310	01214		PIPE CULVERT HEADWALL-42 IN	2.00	EACH		\$	
1320	01216		PIPE CULVERT HEADWALL-48 IN	8.00	EACH		\$	
1330	01220		PIPE CULVERT HEADWALL-60 IN	2.00	EACH		\$	
1340	01222		PIPE CULVERT HEADWALL-66 IN	2.00	EACH		\$	
1350	01450		S & F BOX INLET-OUTLET-18 IN	5.00	EACH		\$	
1360	01451		S & F BOX INLET-OUTLET-24 IN	2.00	EACH		\$	
1370	01452		S & F BOX INLET-OUTLET-30 IN	3.00	EACH		\$	
1380	01480		CURB BOX INLET TYPE B	8.00	EACH		\$	
1390	03389		PVC PIPE-10 IN	78.00	LF		\$	
1395	02690		SAFELOADING (ADDED: 8-22-18)	24.00	CUYD		\$	
1400	20166ES810		TEMPORARY PIPE (REVISED: 8-22-18)	132.00	LF		\$	
1410	24025EC		PIPE CULVERT HEADWALL-72 IN	2.00	EACH		\$	
1420	24026EC		PIPE CULVERT HEADWALL-54 IN	6.00	EACH		\$	

Section: 0004 - BRIDGE-CULVERT--STA 99+30

LINE	BID CODE	ALT	DESCRIPTION	QUANTITY	UNIT	UNIT PRIC	FP	AMOUNT
1430	08002		STRUCTURE EXCAV-SOLID ROCK	33.00	CUYD		\$	
1440	08003		FOUNDATION PREPARATION	1.00	LS		\$	
1450	08100		CONCRETE-CLASS A	145.00	CUYD		\$	
1460	08150		STEEL REINFORCEMENT	13,095.00	LB		\$	

Section: 0005 - BRIDGE- STA. 143+23

PROPOSAL BID ITEMS

181026

Page 5 of 7

Report Date 8/22/18

LINE	BID CODE	ALT	DESCRIPTION	QUANTITY	UNIT	UNIT PRIC	FP	AMOUNT
1470	02231		STRUCTURE GRANULAR BACKFILL	283.00	CUYD		\$	
1480	02998		MASONRY COATING	1,112.00	SQYD		\$	
1490	03299		ARMORED EDGE FOR CONCRETE	138.90	LF		\$	
1500	08019		CYCLOPEAN STONE RIP RAP	412.00	TON		\$	
1510	08046		PILES-STEEL HP12X53	616.00	LF		\$	
1520	08094		PILE POINTS-12 IN	22.00	EACH		\$	
1530	08100		CONCRETE-CLASS A	192.60	CUYD		\$	
1540	08104		CONCRETE-CLASS AA	443.40	CUYD		\$	
1550	08150		STEEL REINFORCEMENT	28,829.00	LB		\$	
1560	08151		STEEL REINFORCEMENT-EPOXY COATED	134,232.00	LB		\$	
1570	08633		PRECAST PC I BEAM TYPE 3	1,235.10	LF		\$	
1580	20637ED		DRILLED SHAFT-ROCK 48 IN	72.00	LF		\$	
1590	20746ED		ROCK CORINGS	132.00	LF		\$	
1600	21084ED		SOUNDINGS	82.00	LF		\$	
1610	21532ED		RAIL SYSTEM TYPE III	420.00	LF		\$	
1620	22417EN		DRILLED SHAFT-54 IN-COMMON	82.00	LF		\$	

Section: 0006 - BRIDGE-STA 389+65

LINE	BID CODE	ALT	DESCRIPTION	QUANTITY	UNIT	UNIT PRIC	FP	AMOUNT
1630	02231		STRUCTURE GRANULAR BACKFILL	408.00	CUYD		\$	
1640	02998		MASONRY COATING	766.00	SQYD		\$	
1650	03299		ARMORED EDGE FOR CONCRETE	125.40	LF		\$	
1660	08001		STRUCTURE EXCAVATION-COMMON	141.00	CUYD		\$	
1670	08002		STRUCTURE EXCAV-SOLID ROCK	312.00	CUYD		\$	
1680	08019		CYCLOPEAN STONE RIP RAP	473.00	TON		\$	
1690	08039		PRE-DRILLING FOR PILES	90.00	LF		\$	
1700	08046		PILES-STEEL HP12X53	822.00	LF		\$	
1710	08094		PILE POINTS-12 IN	39.00	EACH		\$	
1720	08100		CONCRETE-CLASS A	266.70	CUYD		\$	
1730	08104		CONCRETE-CLASS AA	489.70	CUYD		\$	
1740	08150		STEEL REINFORCEMENT	43,785.00	LB		\$	
1750	08151		STEEL REINFORCEMENT-EPOXY COATED	163,421.00	LB		\$	
1760	08634		PRECAST PC I BEAM TYPE 4	1,396.70	LF		\$	
1770	21532ED		RAIL SYSTEM TYPE III	568.00	LF		\$	

Section: 0007 - BRIDGE- STA. 217+92

LINE	BID CODE	ALT	DESCRIPTION	QUANTITY	UNIT	UNIT PRIC	FP	AMOUNT
1780	02231		STRUCTURE GRANULAR BACKFILL	196.00	CUYD		\$	
1790	02998		MASONRY COATING	869.00	SQYD		\$	
1800	03299		ARMORED EDGE FOR CONCRETE	136.00	LF		\$	
1810	08001		STRUCTURE EXCAVATION-COMMON	119.00	CUYD		\$	
1820	08002		STRUCTURE EXCAV-SOLID ROCK	161.00	CUYD		\$	
1830	08019		CYCLOPEAN STONE RIP RAP	899.00	TON		\$	
1840	08046		PILES-STEEL HP12X53	403.00	LF		\$	
1850	08094		PILE POINTS-12 IN	18.00	EACH		\$	

PROPOSAL BID ITEMS

181026

Page 6 of 7

Report Date 8/22/18

LINE	BID CODE	ALT	DESCRIPTION	QUANTITY	UNIT	UNIT PRIC	FP	AMOUNT
1860	08100		CONCRETE-CLASS A	249.50	CUYD		\$	
1870	08104		CONCRETE-CLASS AA	299.20	CUYD		\$	
1880	08150		STEEL REINFORCEMENT	33,642.00	LB		\$	
1890	08151		STEEL REINFORCEMENT-EPOXY COATED	84,225.00	LB		\$	
1900	08632		PRECAST PC I BEAM TYPE 2	802.10	LF		\$	
1910	21532ED		RAIL SYSTEM TYPE III	330.00	LF		\$	

Section: 0008 - BRIDGE- STA 336+50

LINE	BID CODE	ALT	DESCRIPTION	QUANTITY	UNIT	UNIT PRIC	FP	AMOUNT
1920	02231		STRUCTURE GRANULAR BACKFILL	326.00	CUYD		\$	
1930	02998		MASONRY COATING	1,165.00	SQYD		\$	
1940	03299		ARMORED EDGE FOR CONCRETE	96.00	LF		\$	
1950	08001		STRUCTURE EXCAVATION-COMMON	326.00	CUYD		\$	
1960	08019		CYCLOPEAN STONE RIP RAP	1,200.00	TON		\$	
1970	08033		TEST PILES	149.00	LF		\$	
1980	08046		PILES-STEEL HP12X53	1,444.00	LF		\$	
1990	08094		PILE POINTS-12 IN (REVISED: 8-22-18)	102.00	EACH		\$	
2000	08100		CONCRETE-CLASS A	368.00	CUYD		\$	
2010	08104		CONCRETE-CLASS AA	763.00	CUYD		\$	
2020	08150		STEEL REINFORCEMENT	49,751.00	LB		\$	
2030	08151		STEEL REINFORCEMENT-EPOXY COATED	262,980.00	LB		\$	
2040	08160		STRUCTURAL STEEL 125 LB	1.00	LS		\$	
2050	08500		APPROACH SLAB	266.00	SQYD		\$	
2060	08634		PRECAST PC I BEAM TYPE 4	2,394.00	LF		\$	
2070	21532ED		RAIL SYSTEM TYPE III	966.00	LF		\$	

Section: 0009 - BRIDGE- STA. 290+95

LINE	BID CODE	ALT	DESCRIPTION	QUANTITY	UNIT	UNIT PRIC	FP	AMOUNT
2080	02231		STRUCTURE GRANULAR BACKFILL	505.00	CUYD		\$	
2090	02998		MASONRY COATING	1,902.00	SQYD		\$	
2100	08001		STRUCTURE EXCAVATION-COMMON	1,456.00	CUYD		\$	
2110	08002		STRUCTURE EXCAV-SOLID ROCK	1,078.00	CUYD		\$	
2120	08019		CYCLOPEAN STONE RIP RAP	2,876.00	TON		\$	
2130	08046		PILES-STEEL HP12X53	3,449.00	LF		\$	
2140	08094		PILE POINTS-12 IN	48.00	EACH		\$	
2150	08100		CONCRETE-CLASS A	1,856.70	CUYD		\$	
2160	08104		CONCRETE-CLASS AA	1,316.30	CUYD		\$	
2170	08150		STEEL REINFORCEMENT	306,597.00	LB		\$	
2180	08151		STEEL REINFORCEMENT-EPOXY COATED	373,108.00	LB		\$	
2190	08160		STRUCTURAL STEEL 1200 LB	1.00	LS		\$	
2200	08472		EXPANSION DAM-4 IN NEOPRENE	102.00	LF		\$	
2210	21532ED		RAIL SYSTEM TYPE III	1,542.00	LF		\$	
2220	24582EN		PRECAST PC I BEAM-HN 72-49	3,640.00	LF		\$	

PROPOSAL BID ITEMS

181026

Page 7 of 7

Report Date 8/22/18

Section: 0010 - BRIDGE-CULVERT- STA. 47+08.91

LINE	BID CODE	ALT	DESCRIPTION	QUANTITY	UNIT	UNIT PRIC	FP	AMOUNT
2230	08002		STRUCTURE EXCAV-SOLID ROCK	965.00	CUYD		\$	
2240	08003		FOUNDATION PREPARATION	1.00	LS		\$	
2250	08100		CONCRETE-CLASS A	184.30	CUYD		\$	
2260	08150		STEEL REINFORCEMENT	26,325.00	LB		\$	

Section: 0011 - TRAINEE

LINE	BID CODE	ALT	DESCRIPTION	QUANTITY	UNIT	UNIT PRIC	FP	AMOUNT
2270	02742		TRAINEE PAYMENT REIMBURSEMENT (1-GROUP 2, 3 OR 4 OPERATOR)	1,400.00	HOUR		\$	

Section: 0012 - DEMOBILIZATION &/OR MOBILIZATION

LINE	BID CODE	ALT	DESCRIPTION	QUANTITY	UNIT	UNIT PRIC	FP	AMOUNT
2280	02568		MOBILIZATION	1.00	LS		\$	
2290	02569		DEMOBILIZATION	1.00	LS		\$	

GENERAL SUMMARY

COUNTY OF	ITEM NO.	SHEET NO.
WHITLEY MCCREARY	11-184.10	R2G

REVISED 8/21/2018

NOTES:

WHITLEY COUNTY
EXCAVATION INCLUDES:
694,526 CY COMMON EXC.
769,821 CY SOLID ROCK
14,301 CY DITCH LEFT
7,557 CY DITCH RIGHT
9,293 CY EMBANKMENT BENCHING
68,562 CY TRANSVERSE BENCHING
1,192 CY FROM PIPE SHEETS
1,565,252 CY TOTAL EXCAVATION

EMBANKMENT INCLUDES:
821,743 CY MAINLINE EMB
316,072 CY DURABLE ROCK
9,293 CY EMBANKMENT BENCHING
68,562 CY TRANSVERSE BENCHING
185 CY REFILL
77,887 CY ROCK ROADBED
1,293,742 CY TOTAL EMBANKMENT

① TOTAL EARTHWORK INCLUDES EMBANKMENT PLUS TRANSVERSE BENCHING AND DITCH EXC FROM PIPE SHEETS

② FOR USE AROUND PERFORATED PIPE HEADWALLS

③ FOR CONTROLLING DUST CAUSED BY MAINTAINING TRAFFIC ONLY

④ APPROXIMATELY 162 ACRES

⑤ SEE GEOTECHNICAL NOTES 15 & 25

⑥ 17,631 SY FOR GEOTECHNICAL NOTE 10
360 SY FOR CONSTRUCTION ENTRANCES
126,472 SY FOR ROCKROAD BED (WHITLEY)
2,238 SY FOR ROCKROAD BED (MCCREARY)

⑦ FOR WRAPPING PIPE TRENCH BACKFILL

⑧ CARRIED OVER FROM PIPE SUMMARY

⑨ IN ACCORDANCE WITH SECTION 112.03.01 THE CONTRACTOR WILL RETAIN OWNERSHIP UPON COMPLETION OF THE PROJECT

⑩ SEE GEOTECHNICAL NOTE 22

⑪ SEE GEOTECHNICAL NOTE 26

⑫ INCLUDES 60,000 SY FOR 2:1 SLOPES

⑬ INCLUDES QUANTITY TO BE PLACED ON THE STONE SUBGRADE THAT IS NOT TO BE PAVED:
25,000 SY (WHITLEY)
1,600 SY (MCCREARY)

ITEM	DESCRIPTION	UNIT	MAINLINE KY 92	KY 1673	CAMPBELL RD	JELlico CREEK	CHURCH RD	FRONTAGE RD	OLD JELlico CREEK RD	KY 92 CONNECTOR	EXISTING KY 92 REMOVAL	WEST TIE-IN	EAST TIE-IN	WHITLEY CO TOTALS	MAINLINE KY 92	WEST TIE-IN	MCCREARY CO TOTAL	TOTAL PROJECT
78	CRUSHED AGGREGATE SIZE NUMBER 2	TON	36											36				36
1000	PERFORATED PIPE - 4 IN	LF	3,486											3,486				3,486
1002	PERFORATED PIPE - 8 IN	LF	2,127											2,127				2,127
1010	NON-PERFORATED PIPE - 4 IN	LF	1,697											1,697				1,697
1012	NON-PERFORATED PIPE - 8 IN	LF	264											264				264
1020	PERFORATED PIPE HEADWALL TY 1 - 4 IN	EACH	7											7				7
1024	PERFORATED PIPE HEADWALL TY 2 - 4 IN	EACH	3											3				3
1028	PERFORATED PIPE HEADWALL TY 3 - 4 IN	EACH	16											16				16
1032	PERFORATED PIPE HEADWALL TY 4 - 4 IN	EACH	9											9				9
1034	PERFORATED PIPE HEADWALL TY 4 - 8 IN	EACH	26											26				26
1740	CORED HOLE DRAINAGE BOX CON-4 IN	EACH	3											3				3
1891	ISLAND HEADER CURB TYPE 2	LF	261.25											261.25				261.25
1984	DELINEATORS FOR BARRIER - WHITE	EACH	500											500				500
1987	DELINEATORS FOR GUARDRAIL B/W	EACH	85	3				18						127		4		131
2003	RELOCATE TEMP CONCRETE BARRIER	LF	5,000											5,000				5,000
2014	BARRICADE - TYPE III	EACH	20											20				20
2091	REMOVE PAVEMENT	SO. YD.	7,829											7,829				7,829
2159	TEMPORARY DITCH	LF	10,019											10,019				10,019
2200	ROADWAY EXCAVATION	CU. YD.	1,454,967	1,920	19	688	3,149	5,460	69	5,571				1,541,598	23,529	125	23,654	1,565,252
2242	WATER	M. GAL.	95											95	5		5	100
2351	GUARDRAIL STEEL "W" BEAM SINGLE FACE	LF	5,075	75				1,312.5						7,987.5			212.5	8,200
2360	GUARDRAIL TERMINAL SECTION NUMBER 1	EACH	12					2						15				15
2363	GUARDRAIL CONNECTOR TO BRIDGE END TY A	EACH	12											12				12
2381	REMOVE GUARDRAIL	LF	575											575				575
2391	GUARDRAIL END TREATMENT TYPE 4A	EACH	9	1										10		1		11
2404	SEPTIC TANK TREATMENT	EACH	9											9				9
2429	RIGHT-OF-WAY MONUMENT TYPE 1	EACH	145											145				145
2432	WITNESS POST	EACH	135											135				135
2475	PLUG WATER WELL	EACH	3											3				3
2483	CHANNEL LINING CLASS II	TON	1,412						101					1,513				1,513
2484	CHANNEL LINING CLASS III	TON	8,313	24			759							9,321			1	9,321
2545	CLEARING AND GRUBBING	L.S.	222											222				222
2555	CONCRETE - CLASS B	CU. YD.	1,154	36	36	72	36	36	36					1,406			36	1,442
2562	SIGNS	L.S.	1											1			1	1
2568	MOBILIZATION	L.S.	1											1			1	1
2569	DEMOLITION	L.S.	1											1			1	1
2585	EDGE KEY	LF	11	19	68	24								122		20	20	142
2598	FABRIC-GEOTEXTILE TYPE III	SO. YD.	144,463											144,463	2,238		2,238	146,701
2600	FABRIC GEOTEXTILE TY IV FOR PIPE	SO. YD.	6,121	62	61	397	96	240						7,133		93	93	7,226
2650	MAINTAIN AND CONTROL TRAFFIC	L.S.	1											1			1	1
2651	DIVERSION #1 - CAMPBELL RD	L.S.	1											1			1	1
2651	DIVERSION #2 - JELlico CREEK CHURCH RD	L.S.	1											1			1	1
2651	DIVERSION #3 - FRONTAGE RD	L.S.	1											1			1	1
2651	DIVERSION #4 - TEMP KY 92	L.S.	1											1			1	1
2671	PORTABLE CHANGEABLE MESSAGE SIGN	EACH	3											3		1	1	4
2692	SETTLEMENT PLATFORM	EACH	3											3				3
2701	TEMPORARY SILT FENCE	LF	9,619											9,619	400		400	10,019

GENERAL SUMMARY

GENERAL SUMMARY

COUNTY OF	ITEM NO.	SHEET NO.
WHITLEY MCCREARY	11-184.10	R2G

REVISED 8/21/2018

NOTES:

WHITLEY COUNTY
EXCAVATION INCLUDES:
694,526 CY COMMON EXC.
769,821 CY SOLID ROCK
14,301 CY DITCH LEFT
7,557 CY DITCH RIGHT
9,293 CY EMBANKMENT BENCHING
68,562 CY TRANSVERSE BENCHING
1,192 CY FROM PIPE SHEETS
1,565,252 CY TOTAL EXCAVATION

EMBANKMENT INCLUDES:
821,743 CY MAINLINE EMB
316,072 CY DURABLE ROCK
9,293 CY EMBANKMENT BENCHING
68,562 CY TRANSVERSE BENCHING
185 CY REFILL
77,887 CY ROCK ROADBED
1,293,742 CY TOTAL EMBANKMENT

① TOTAL EARTHWORK INCLUDES EMBANKMENT PLUS TRANSVERSE BENCHING AND DITCH EXC FROM PIPE SHEETS

② FOR USE AROUND PERFORATED PIPE HEADWALLS

③ FOR CONTROLLING DUST CAUSED BY MAINTAINING TRAFFIC ONLY

④ APPROXIMATELY 162 ACRES

⑤ SEE GEOTECHNICAL NOTES 15 & 25

⑥ 17,631 SY FOR GEOTECHNICAL NOTE 10
360 SY FOR CONSTRUCTION ENTRANCES
126,472 SY FOR ROCKROAD BED (WHITLEY)
2,238 SY FOR ROCKROAD BED (MCCREARY)

⑦ FOR WRAPPING PIPE TRENCH BACKFILL

⑧ CARRIED OVER FROM PIPE SUMMARY

⑨ IN ACCORDANCE WITH SECTION 112.03.01 THE CONTRACTOR WILL RETAIN OWNERSHIP UPON COMPLETION OF THE PROJECT

⑩ SEE GEOTECHNICAL NOTE 22

⑪ SEE GEOTECHNICAL NOTE 26

⑫ INCLUDES 60,000 SY FOR 2:1 SLOPES

⑬ INCLUDES QUANTITY TO BE PLACED ON THE STONE SUBGRADE THAT IS NOT TO BE PAVED:
25,000 SY (WHITLEY)
1,600 SY (MCCREARY)

ITEM	DESCRIPTION	UNIT	MAINLINE KY 92	KY 1673	CAMPBELL RD	JELlico CREEK CHURCH RD	FRONTAGE RD	OLD JELlico CREEK RD	CONNECTOR KY 92	EXISTING KY 92 REMOVAL	WEST TIE-IN	EAST TIE-IN	WHITLEY CO TOTALS	MAINLINE KY 92	WEST TIE-IN	MCCREARY CO TOTAL	TOTAL PROJECT
78	CRUSHED AGGREGATE SIZE NUMBER 2	① TON	36										36				36
1000	PERFORATED PIPE - 4 IN	LN FT	3,486										3,486				3,486
1002	PERFORATED PIPE - 8 IN	LN FT	2,127										2,127				2,127
1010	NON-PERFORATED PIPE - 4 IN	LN FT	1,697										1,697				1,697
1012	NON-PERFORATED PIPE - 8 IN	LN FT	264										264				264
1020	PERFORATED PIPE HEADWALL TY 1 - 4 IN	EACH	7										7				7
1024	PERFORATED PIPE HEADWALL TY 2 - 4 IN	EACH	3										3				3
1028	PERFORATED PIPE HEADWALL TY 3 - 4 IN	EACH	16										16				16
1032	PERFORATED PIPE HEADWALL TY 4 - 4 IN	EACH	9										9				9
1034	PERFORATED PIPE HEADWALL TY 4 - 8 IN	EACH	26										26				26
1740	CORED HOLE DRAINAGE BOX CON-4 IN	EACH	3										3				3
1891	ISLAND HEADER CURB TYPE 2	LF	261.25										261.25				261.25
1984	DELINEATORS FOR BARRIER - WHITE	EACH	500										500				500
1987	DELINEATORS FOR GUARDRAIL B/W	EACH	85	3			18				3	18	127		4		131
2003	RELOCATE TEMP CONCRETE BARRIER	LN. FT.	5,000										5,000				5,000
2014	BARRICADE - TYPE III	EACH	20										20				20
2091	REMOVE PAVEMENT	SO. YD.	7,829										7,829				7,829
2159	TEMPORARY DITCH	LN. FT.	10,019										10,019				10,019
2200	ROADWAY EXCAVATION	① CU. YD.	1,454,967	1,920		688	3,149	5,460	69	5,571		125	1,541,598	23,529	125	23,654	1,565,252
2242	WATER	② M. GAL.	95										95	5		5	100
2351	GUARDRAIL STEEL "W" BEAM SINGLE FACE	LN. FT.	5,075	75			1,312.5				125	1,400	7,987.5		212.5	212.5	8,200
2360	GUARDRAIL TERMINAL SECTION NUMBER 1	EACH	12				2					1	15				15
2363	GUARDRAIL CONNECTOR TO BRIDGE END TY A	EACH	12										12				12
2381	REMOVE GUARDRAIL	LN. FT.	575										575				575
2391	GUARDRAIL END TREATMENT TYPE 4A	EACH	9	1									10		1		11
2404	SEPTIC TANK TREATMENT	EACH	9										9				9
2429	RIGHT-OF-WAY MONUMENT TYPE 1	EACH	145										145				145
2432	WITNESS POST	EACH	135										135				135
2475	PLUG WATER WELL	EACH	3										3				3
2483	CHANNEL LINING CLASS II	TON	1,412										1,513				1,513
2484	CHANNEL LINING CLASS III	TON	8,313	24			759		101			225	9,321			1	9,321
2545	CLEARING AND GRUBBING	L.S.											1				1
2555	CONCRETE - CLASS B	③ CU. YD.	222										222				222
2562	SIGNS	SO. FT.	1,154	36			36	36				36	1,406	36		36	1,442
2568	MOBILIZATION	L.S.	1										1	1		1	1
2569	DEMOLITION	L.S.	1										1	1		1	1
2598	EDGE KEY	⑤ LN. FT.	19			68	24						122		20	20	142
2600	FABRIC GEOTEXTILE TY IV FOR PIPE	⑥ SO. YD.	6,121	62		61	397	96	240			156	7,133	2,238	93	2,238	7,226
2650	MAINTAIN AND CONTROL TRAFFIC	L.S.	1										1		1		1
2651	DIVERSION #1 - CAMPBELL RD	L.S.	1										1				1
2651	DIVERSION #2 - JELlico CREEK CHURCH RD	L.S.	1										1				1
2651	DIVERSION #3 - FRONTAGE RD	L.S.	1										1				1
2651	DIVERSION #4 - TEMP KY 92	L.S.	1										1				1
2671	PORTABLE CHANGEABLE MESSAGE SIGN	⑧ EACH	3										3	1	1	1	4
2692	SETTLEMENT PLATFORM	⑩ EACH	3										3				3
2701	TEMPORARY SILT FENCE	LN. FT.	9,619										9,619	400		400	10,019

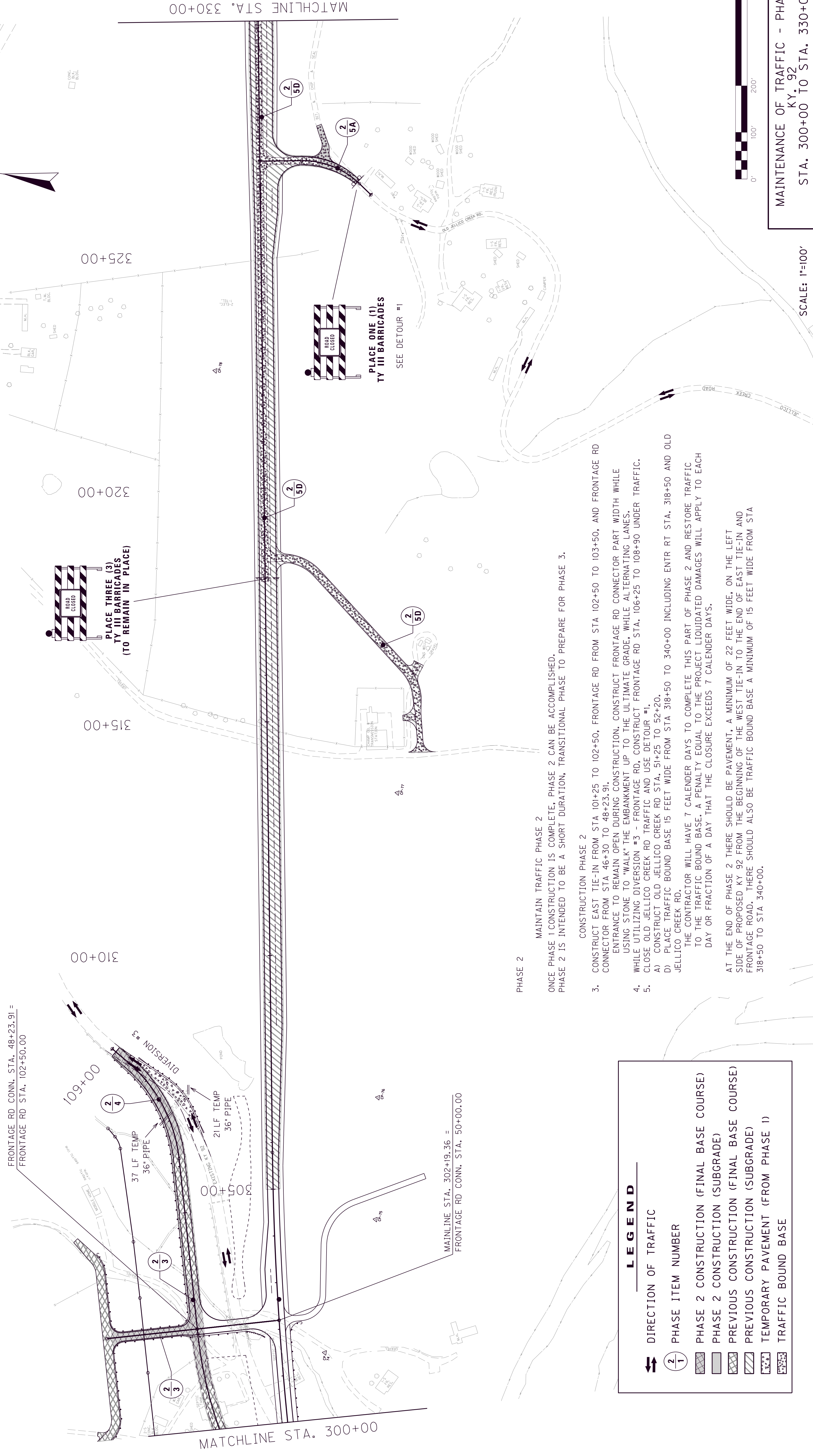
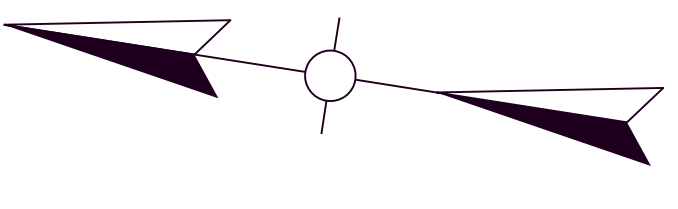
Removed Geo Fab Ty 1

FILE NAME: G:\ENGR\H0185.0\PHASE 11\SUBMITTALS\FINAL PLANS UPDATE 3.0\R2G.DGN
DATE PLOTTED: August 21, 2018
USER: msjdpes

E-SHEET NAME: MicroStation v8.11.9.459
DATE PLOTTED: August 21, 2018

GENERAL SUMMARY

REVISED 8/21/2018



FRONTAGE RD CONN. STA. 48+23.91 =
 FRONTAGE RD STA. 102+50.00

109+00

310+00

320+00

325+00

MATCHLINE STA. 300+00

MAINLINE STA. 302+19.36 =
 FRONTAGE RD CONN. STA. 50+00.00

MATCHLINE STA. 330+00

PLACE THREE (3)
 TYPE III BARRICADES
 TO REMAIN IN PLACE

PLACE ONE (1)
 TYPE III BARRICADES
 SEE DETOUR #1

PHASE 2

MAINTAIN TRAFFIC PHASE 2
 ONCE PHASE 1 CONSTRUCTION IS COMPLETE, PHASE 2 CAN BE ACCOMPLISHED.
 PHASE 2 IS INTENDED TO BE A SHORT DURATION, TRANSITIONAL PHASE TO PREPARE FOR PHASE 3.

- CONSTRUCTION PHASE 2
- CONSTRUCT EAST TIE-IN FROM STA 101+25 TO 102+50, FRONTAGE RD FROM STA 102+50 TO 103+50, AND FRONTAGE RD CONNECTOR FROM STA 46+30 TO 48+23.91.
 USING STONE TO "WALK" THE EMBANKMENT UP TO THE ULTIMATE GRADE, WHILE ALTERNATING LANES.
 - WHILE UTILIZING DIVERSION #3 -- FRONTAGE RD, CONSTRUCT FRONTAGE RD STA. 106+25 TO 108+90 UNDER TRAFFIC.
 - CLOSE OLD JELLYCO CREEK RD TRAFFIC AND USE DETOUR #1.
 - CONSTRUCT OLD JELLYCO CREEK RD STA. 51+25 TO 52+20.
 - PLACE TRAFFIC BOUND BASE 15 FEET WIDE FROM STA 318+50 TO 340+00 INCLUDING ENTR RT STA. 318+50 AND OLD JELLYCO CREEK RD.
 THE CONTRACTOR WILL HAVE 7 CALENDER DAYS TO COMPLETE THIS PART OF PHASE 2 AND RESTORE TRAFFIC TO THE TRAFFIC BOUND BASE. A PENALTY EQUAL TO THE PROJECT LIQUIDATED DAMAGES WILL APPLY TO EACH DAY OR FRACTION OF A DAY THAT THE CLOSURE EXCEEDS 7 CALENDER DAYS.
- AT THE END OF PHASE 2 THERE SHOULD BE PAVEMENT, A MINIMUM OF 22 FEET WIDE, ON THE LEFT SIDE OF PROPOSED KY 92 FROM THE BEGINNING OF THE WEST TIE-IN TO THE END OF EAST TIE-IN AND FRONTAGE ROAD. THERE SHOULD ALSO BE TRAFFIC BOUND BASE A MINIMUM OF 15 FEET WIDE FROM STA 318+50 TO STA 340+00.

LEGEND

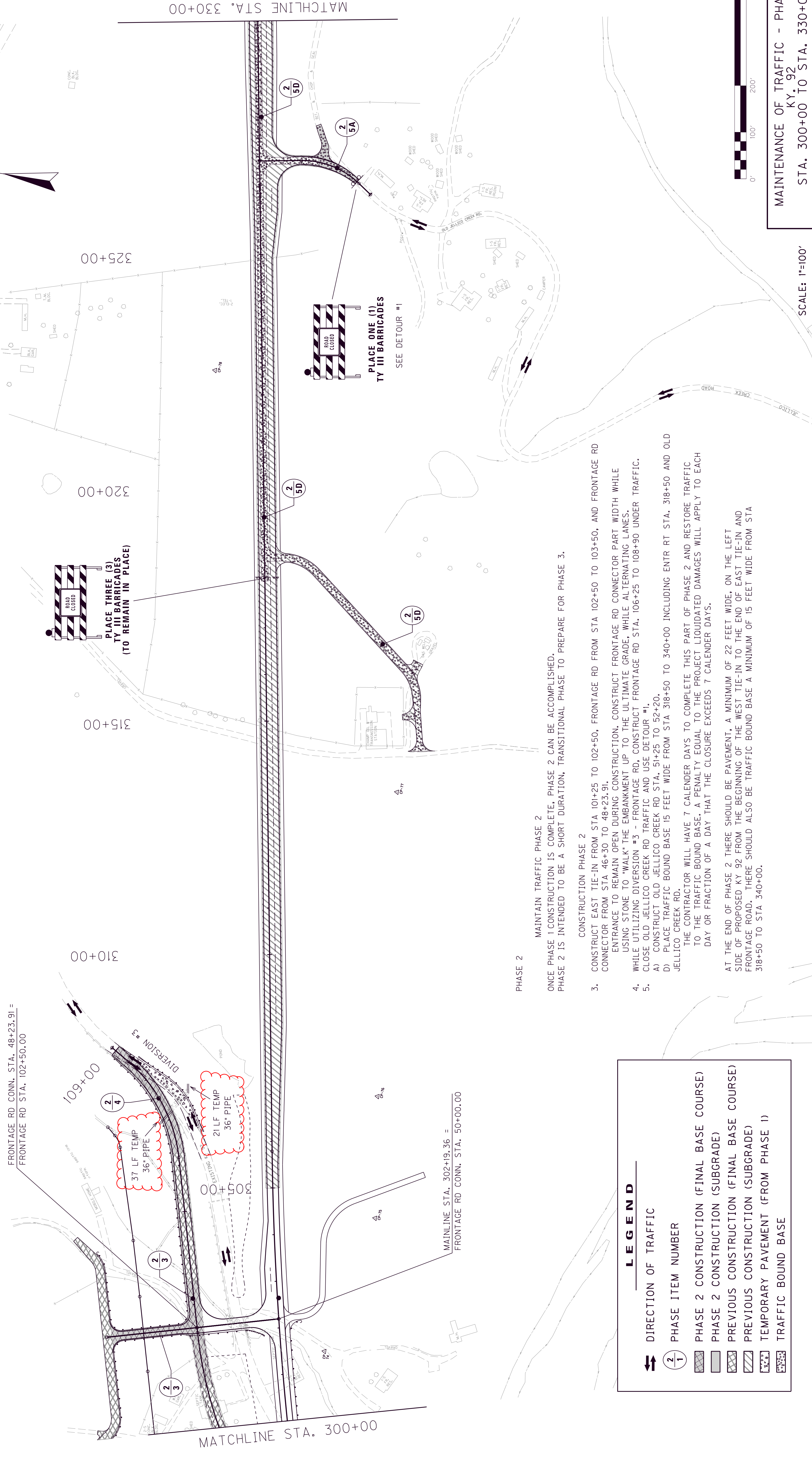
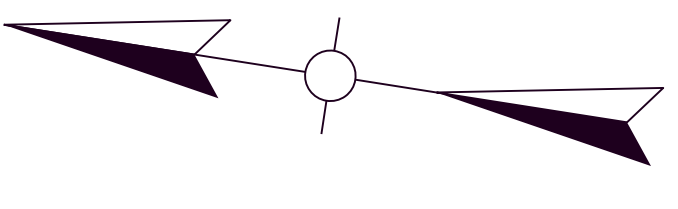
	DIRECTION OF TRAFFIC
	PHASE ITEM NUMBER
	PHASE 2 CONSTRUCTION (FINAL BASE COURSE)
	PHASE 2 CONSTRUCTION (SUBGRADE)
	PREVIOUS CONSTRUCTION (FINAL BASE COURSE)
	PREVIOUS CONSTRUCTION (SUBGRADE)
	TEMPORARY PAVEMENT (FROM PHASE 1)
	TRAFFIC BOUND BASE



SCALE: 1"=100'

MAINTENANCE OF TRAFFIC - PHASE 2
 KY. 92
 STA. 300+00 TO STA. 330+00

REVISED 8/21/2018



FILE NAME: G:\ENGR\H0185.01\PHASE 11\SUBMITTALS\FINAL PLANS UPDATE 3.0\R71.DGN
 USF2: msfjes
 DATE PLOTTED: August 20, 2018
 E-SHEET NAME: MicroStation v8.11.9.459

LEGEND

	DIRECTION OF TRAFFIC
	PHASE ITEM NUMBER
	PHASE 2 CONSTRUCTION (FINAL BASE COURSE)
	PHASE 2 CONSTRUCTION (SUBGRADE)
	PREVIOUS CONSTRUCTION (FINAL BASE COURSE)
	PREVIOUS CONSTRUCTION (SUBGRADE)
	TEMPORARY PAVEMENT (FROM PHASE 1)
	TRAFFIC BOUND BASE

- PHASE 2**
- MAINTAIN TRAFFIC PHASE 2
 ONCE PHASE 1 CONSTRUCTION IS COMPLETE, PHASE 2 CAN BE ACCOMPLISHED.
 PHASE 2 IS INTENDED TO BE A SHORT DURATION, TRANSITIONAL PHASE TO PREPARE FOR PHASE 3.
- CONSTRUCTION PHASE 2**
- CONSTRUCT EAST TIE-IN FROM STA 101+25 TO 102+50, FRONTAGE RD FROM STA 102+50 TO 103+50, AND FRONTAGE RD CONNECTOR FROM STA 46+30 TO 48+23.91.
 ENTRANCE TO REMAIN OPEN DURING CONSTRUCTION. CONSTRUCT FRONTAGE RD CONNECTOR PART WIDTH WHILE USING STONE TO "WALK" THE EMBANKMENT UP TO THE ULTIMATE GRADE, WHILE ALTERNATING LANES.
 - WHILE UTILIZING DIVERSION #3 -- FRONTAGE RD, CONSTRUCT FRONTAGE RD STA. 106+25 TO 108+90 UNDER TRAFFIC.
 - CLOSE OLD JELLYCO CREEK RD TRAFFIC AND USE DETOUR #1.
 - CONSTRUCT OLD JELLYCO CREEK RD STA. 51+25 TO 52+20.
 - PLACE TRAFFIC BOUND BASE 15 FEET WIDE FROM STA 318+50 TO 340+00 INCLUDING ENTR RT STA. 318+50 AND OLD JELLYCO CREEK RD.
 THE CONTRACTOR WILL HAVE 7 CALENDER DAYS TO COMPLETE THIS PART OF PHASE 2 AND RESTORE TRAFFIC TO THE TRAFFIC BOUND BASE. A PENALTY EQUAL TO THE PROJECT LIQUIDATED DAMAGES WILL APPLY TO EACH DAY OR FRACTION OF A DAY THAT THE CLOSURE EXCEEDS 7 CALENDER DAYS.
- AT THE END OF PHASE 2 THERE SHOULD BE PAVEMENT, A MINIMUM OF 22 FEET WIDE, ON THE LEFT SIDE OF PROPOSED KY 92 FROM THE BEGINNING OF THE WEST TIE-IN TO THE END OF EAST TIE-IN AND FRONTAGE ROAD. THERE SHOULD ALSO BE TRAFFIC BOUND BASE A MINIMUM OF 15 FEET WIDE FROM STA 318+50 TO STA 340+00.



SCALE: 1"=100'
 MAINTENANCE OF TRAFFIC - PHASE 2
 KY. 92
 STA. 300+00 TO STA. 330+00

PIPE DRAINAGE SHEET

COUNTY OF
**WHITLEY
MCCREARY**

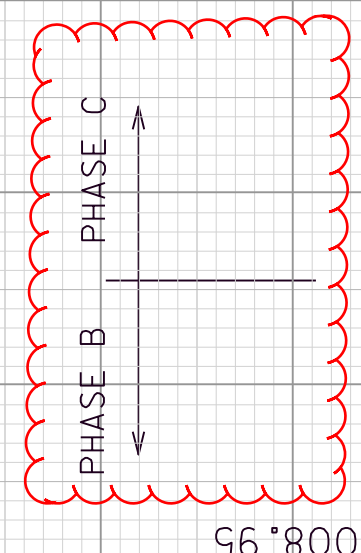
ITEM NO.
11-184.10

SHEET NO.
R162

		CULVERT PIPE										TEMPORARY PIPE - 36"				
MAXIMUM COVER HEIGHT	DESIGN PH LEVEL	18"	24"	30"	36"	42"	48"	54"	60"	66"	72"	S&F BOX I/O	CURB BOX I/O	FABRIC GEOTEXTILE TY. IV FOR PIPE	CU YD	LF
		L I N E A R F E E T														
16.1	M						149							397	24	58

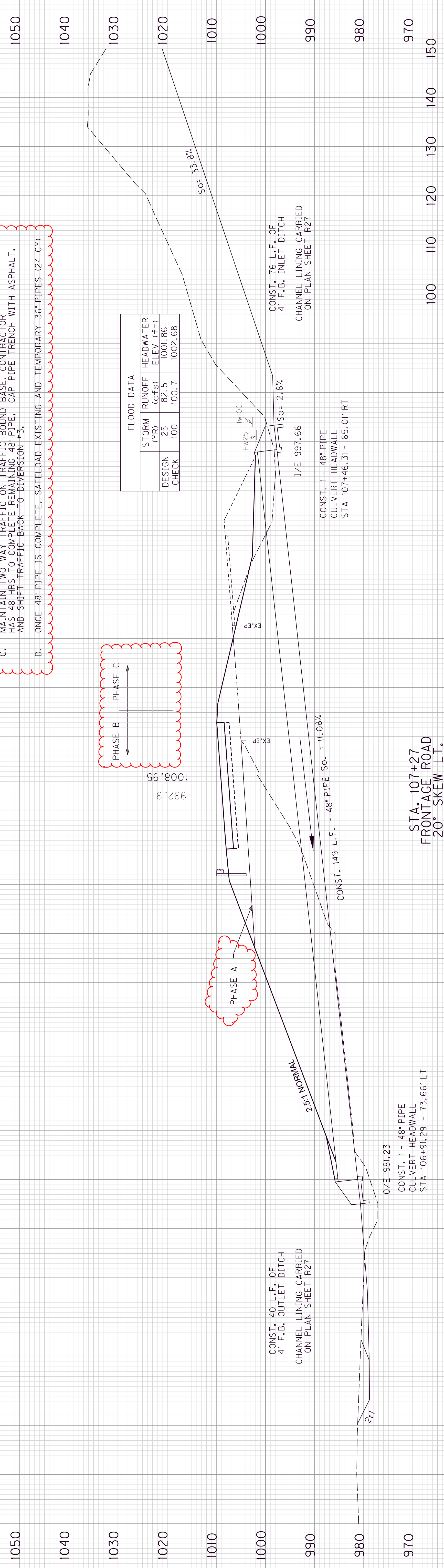
REVISIED 8/21/2018

- A. MAINTAIN TRAFFIC ON EXISTING ROADWAY AND CONSTRUCT DIVERSION #3, PARTIAL EMBANKMENT, AND TEMPORARY 36" PIPES AS SHOWN ON THE PLANS.
- B. PLACE TRAFFIC ON DIVERSION #3. PHASE CONSTRUCT 48" PIPE TO LIMITS INDICATED.
- C. MAINTAIN TWO WAY TRAFFIC ON TRAFFIC BOUND BASE. CONTRACTOR HAS 48 HRS TO COMPLETE REMAINING 48" PIPE. CAP PIPE TRENCH WITH ASPHALT, AND SHIFT TRAFFIC BACK TO DIVERSION #3.
- D. ONCE 48" PIPE IS COMPLETE, SAFELoad EXISTING AND TEMPORARY 36" PIPES (24 CY)



FLOOD DATA

STORM (YR)	RUNOFF (CFS)	HEADWATER ELEV (FT)
DESIGN 25	82.5	1001.86
CHECK 100	100.7	1002.68



**STA. 107+27
FRONTAGE ROAD
20° SKEW LT.**

SCALE: 1" = 10' HORIZONTAL
1" = 10' VERTICAL

FRONTAGE RD
PIPE SHEET STA. 107+27

TRANSPORTATION CABINET DEPARTMENT OF HIGHWAYS

McCREARY COUNTY

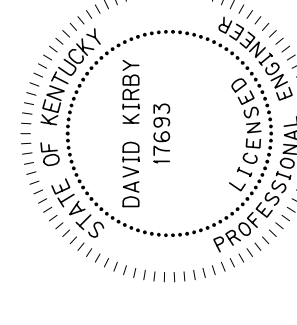
KY 92 OVER MARSH CREEK STA. 336 + 50.00

ESTIMATE OF QUANTITIES

BID ITEM CODE	BID ITEM	UNIT	08100	08104	08150	08151	08019	02231	02998	08046	08033	08094	03299	08634	21532ED	08001	08160	08500
	Substructure																	
	INTEGRAL END BENT #1		30		1127	1292	690	163	41	280	37	9						
	PIER #1		75		11329	96			76	210	17	21						
	PIER #2		76		11558	96			76	196	16	21						
	PIER #3		79		12478	96			76	168	14	21						
	PIER #4		78		12132	96			76	238	19	21						
	INTEGRAL END BENT #2		30		1127	1292	510	163	41	352	46	9						
	Superstructure			763		260012			779				96	2394	966			
	BRIDGE TOTALS		368	763	49751	262980	1200	326	1165	1444	149	102	96	2394	966	326	1	266

① 125 LBS.

**THIS SHEET
REPLACES SHEET 1**



David Kirby
DAVID KIRBY, P.E.
KY NO. 17693

ITEM NUMBER

8-261.30

INDEX OF SHEETS

Sheet No.	Description
S1	TITLE SHEET
S2	GENERAL NOTES
S3	LAYOUT
S4	STAKING DIAGRAM
S5-S7	FOUNDATION LAYOUT
S8	INTEGRAL END BENT 1
S9-S12	PIERS
S13	INTEGRAL END BENT 2
S14	FRAMING PLAN
S15	PCI BEAM TYPE 4 DETAILS
S16	INTERMEDIATE DIAPHRAGM
S17-S18	SUPERSTRUCTURE
S19-S20	CONSTRUCTION ELEVATIONS
S21-S23	SOUNDING LAYOUT
S24	RAILING SYSTEM TYPE 3

SPECIAL NOTES

SPECIAL PROVISIONS

69105) Embankment at Bridge End Bent Structures

STANDARD DRAWINGS

BBP-001-12	Elastomeric Bearing Pads for Prestressed Beams
BBP-002-04	Bearing Details
BGX-006-09	Stencils for Structures
BGX-012-02	Geotechnical Legend
BGX-015-02	Bridge Drains
BGX-017-01	Approach Slab
BJE-001-12	Neoprene Expansion Dams and Armored Edges
BPS-003-09	HP12x53 Steel Pile
RCX-100-05	Treatment of Embankments at End Bents
RCX-105-07	Treatment of Embankments at End Bents

SPECIFICATIONS

2012 Standard Specifications for Road and Bridge Construction.

2012 AASHTO LRFD Bridge Design Specifications.

Δ PILE POINT QUANTITY CHANGED	8-21-18
-------------------------------	---------

DATE:	OCTOBER, 2015	CHECKED BY:	
DESIGNED BY:	DKC	BGS	
DETAILED BY:	LCG	DKC	

Commonwealth of Kentucky
DEPARTMENT OF HIGHWAYS
COUNTY

McCREARY

ROUTE KY 92	CROSSING MARSH CREEK
TITLE SHEET	

	PREPARED BY	SHEET NO.
	HMB PROFESSIONAL	S1A
		DRAWING NO.
		26404

ENGINEERS, INC.

TRANSPORTATION CABINET DEPARTMENT OF HIGHWAYS

McCREARY COUNTY

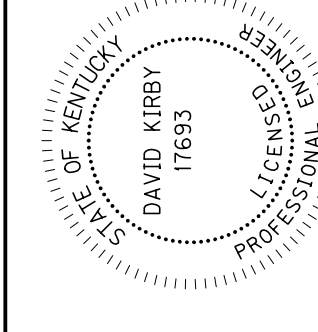
KY 92 OVER MARSH CREEK STA. 336 + 50.00

ESTIMATE OF QUANTITIES

BID ITEM CODE	08100	08104	08150	08151	08019	02231	02998	08046	08033	08094	03299	08634	21532ED	08001	08160	08500
BID ITEM	Concrete Class "A"	Concrete Class "AA"	Steel Reinforcement	Steel Reinforcement Epoxy Coated	Cyclopan Stone Rip-Rap	Structure Granular Backfill	Masonry Coating	Piles - Steel HP 12 x 53	Test Piles	Pile Points 12"	Armored Edge for Concrete	PCI Beam Type 4	Railing System Type 3	Structure Excavation Common	Structural Steel	Approach Slab
UNIT	C.Y.	C.Y.	LBS.	LBS.	Tons	C.Y.	S.Y.	L.F.	L.F.	EA.	L.F.	L.F.	L.F.	C.Y.	LBS.	S.Y.
Substructure																
INTEGRAL END BENT #1	30		1127	1292	690	163	41	280	37	21				83		133
PIER #1	75		11329	96			76	210	17	21				81		
PIER #2	76		11558	96			76	196	16	21				82		
PIER #3	79		12478	96			76	168	14	21				80		
PIER #4	78		12132	96			76	238	19	21						133
INTEGRAL END BENT #2	30		1127	1292	510	163	41	352	46	9						
Superstructure		763		260012			779				96	2394	966		1	
BRIDGE TOTALS	368	763	49751	262980	1200	326	1165	1444	149	102	96	2394	966	326	1	266

① 125 LBS.

THIS SHEET
REPLACES SHEET 1



David Kirby
DAVID KIRBY, P.E.
KY NO. 17693

ITEM NUMBER
8-261.30

INDEX OF SHEETS

Sheet No.	Description
S1	TITLE SHEET
S2	GENERAL NOTES
S3	LAYOUT
S4	STAKING DIAGRAM
S5-S7	FOUNDATION LAYOUT
S8	INTEGRAL END BENT 1
S9-S12	PIERS
S13	INTEGRAL END BENT 2
S14	FRAMING PLAN
S15	PCI BEAM TYPE 4 DETAILS
S16	INTERMEDIATE DIAPHRAGM
S17-S18	SUPERSTRUCTURE
S19-S20	CONSTRUCTION ELEVATIONS
S21-S23	SOUNDING LAYOUT
S24	RAILING SYSTEM TYPE 3

SPECIAL NOTES

SPECIAL PROVISIONS

69105) Embankment at Bridge End Bent Structures

STANDARD DRAWINGS

BBP-001-12	Elastomeric Bearing Pads for Prestressed Beams
BBP-002-04	Bearing Details
BGX-006-09	Stencils for Structures
BGX-012-02	Geotechnical Legend
BGX-015-02	Bridge Drains
BGX-017-01	Approach Slab
BJE-001-12	Neoprene Expansion Dams and Armored Edges
BPS-003-09	HP12x53 Steel Pile
RCX-100-05	Treatment of Embankments at End Bents
RCX-105-07	Treatment of Embankments at End Bents

SPECIFICATIONS

2012 Standard Specifications for Road and Bridge Construction.

2012 AASHTO LRFD Bridge Design Specifications.

Δ PILE POINT QUANTITY CHANGED	8-21-18
-------------------------------	---------

DATE:	OCTOBER, 2015	CHECKED BY:	BGS
DESIGNED BY:	DCK	DATE:	
DETAILED BY:	LGL	DCK	

Commonwealth of Kentucky
DEPARTMENT OF HIGHWAYS

McCREARY
COUNTY
ROUTE **KY 92** CROSSING
MARSH CREEK

TITLE SHEET
PREPARED BY
HMB PROFESSIONAL ENGINEERS, INC.

SHEET NO. **S1A**
DRAWING NO. **26404**



PILE RECORD FOR POINT BEARING PILES					
PILE NUMBER	PILE CUT-OFF ELEVATION	PILE LENGTH IN PLACE	POINT OF PILE ELEVATION AS DRIVEN	DESIGN AXIAL LOAD	TONS
INTEGRAL END BENT 1					
1	1066.90				89
2	1066.90				89
3	1066.90				89
4	1066.90				89
5	1066.90				89
6	1066.90				89
7	1066.90				89
8	1066.90				89
9	1066.90				89

PILE RECORD FOR POINT BEARING PILES					
PILE NUMBER	PILE CUT-OFF ELEVATION	PILE LENGTH IN PLACE	POINT OF PILE ELEVATION AS DRIVEN	DESIGN AXIAL LOAD	TONS
PIER 1					
10	1046.60				79
11	1046.80				79
12	1046.80				79
13	1046.60				79
14	1046.80				79
15	1046.80				79
16	1046.60				79
17	1046.80				79
18	1046.80				79
19	1046.60				79
20	1046.80				79
21	1046.80				79
22	1046.60				79
23	1046.80				79
24	1046.80				79
25	1046.60				79
26	1046.80				79
27	1046.80				79
28	1046.60				79
29	1046.80				79
30	1046.80				79

PILE RECORD FOR POINT BEARING PILES					
PILE NUMBER	PILE CUT-OFF ELEVATION	PILE LENGTH IN PLACE	POINT OF PILE ELEVATION AS DRIVEN	DESIGN AXIAL LOAD	TONS
INTEGRAL END BENT 2					
94	1076.11				89
95	1076.11				89
96	1076.11				89
97	1076.11				89
98	1076.11				89
99	1076.11				89
100	1076.11				89
101	1076.11				89
102	1076.11				89

GENERAL NOTES

△ HAMMER ENERGY: SINGLE-ACTING DIESEL HAMMERS WITH RATED ENERGIES BETWEEN 10 AND 30 KIP-FT ARE RECOMMENDED TO ADEQUATELY DRIVE THE 12X53 H-PILES WITHOUT ENCOUNTERING EXCESSIVE BLOW COUNTS OR OVERSTRESSING THE PILES AT THE PIERS.

△ SINGLE-ACTING DIESEL HAMMERS WITH RATED ENERGIES BETWEEN 30 AND 75 KIP-FT ARE RECOMMENDED TO ADEQUATELY DRIVE THE 12X53 H-PILES WITHOUT ENCOUNTERING EXCESSIVE BLOW COUNTS OR OVERSTRESSING THE PILES AT THE END BENTS.

△ THE USE OF HAMMERS OTHER THAN SINGLE-ACTING DIESEL MAY REQUIRE DIFFERENT ENERGIES. THE CONTRACTOR SHALL SUBMIT THE PROPOSED PILE DRIVING SYSTEM TO THE DEPARTMENT FOR APPROVAL PRIOR TO THE INSTALLATION OF THE FIRST PILE. APPROVAL OF THE PILE DRIVING SYSTEM BY THE ENGINEER WILL BE SUBJECT TO SATISFACTORY FIELD PERFORMANCE OF THE PILE DRIVING PROCEDURES.

△ PILE LAYOUT DIMENSIONS ARE MEASURED AT THE BOTTOM OF FOOTINGS.

△ ALL PILES SHALL BE HP12X53 (50 KSI).

△ ALL PILES SHALL BE FITTED WITH PILE POINTS.

△ PRACTICAL REFUSAL (Case 2): For this project minimum blow requirements are reached after total penetration becomes 1/2 or less for 10 consecutive blows, practical refusal is obtained after the pile is struck an additional 10 blows with total penetration of 1/2 or less. Advance the pile to the depth of driving resistance specified above to depths determined by test piles(see subsurface test sheets). Immediately cease driving operations if the pile visibly becomes damaged during driving. If hard driving encountered because dense strata or an obstructions, such as boulder before the pile is advanced to the depth anticipated, the Engineer will determine if more blows than the average driving resistance specified for practical refusal is required to further advance the pile. Drive additional production and test piles if directed by the Engineer.

PILE RECORD FOR POINT BEARING PILES					
PILE NUMBER	PILE CUT-OFF ELEVATION	PILE LENGTH IN PLACE	POINT OF PILE ELEVATION AS DRIVEN	DESIGN AXIAL LOAD	TONS
PIER 3					
52	1044.64				79
53	1044.64				79
54	1044.64				79
55	1044.64				79
56	1044.64				79
57	1044.64				79
58	1044.64				79
59	1044.64				79
60	1044.64				79
61	1044.64				79
62	1044.64				79
63	1044.64				79
64	1044.64				79
65	1044.64				79
66	1044.64				79
67	1044.64				79
68	1044.64				79
69	1044.64				79
70	1044.64				79
71	1044.64				79
72	1044.64				79

PILE RECORD FOR POINT BEARING PILES					
PILE NUMBER	PILE CUT-OFF ELEVATION	PILE LENGTH IN PLACE	POINT OF PILE ELEVATION AS DRIVEN	DESIGN AXIAL LOAD	TONS
PIER 4					
73	1048.39				79
74	1048.39				79
75	1048.39				79
76	1048.39				79
77	1048.39				79
78	1048.39				79
79	1048.39				79
80	1048.39				79
81	1048.39				79
82	1048.39				79
83	1048.39				79
84	1048.39				79
85	1048.39				79
86	1048.39				79
87	1048.39				79
88	1048.39				79
89	1048.39				79
90	1048.39				79
91	1048.39				79
92	1048.39				79
93	1048.39				79

Definitions of Terms

PILE CUT-OFF ELEVATION: Elevation of the top of pile in the finished structure.
 PILE LENGTH IN PLACE: Actual pile length below the Pile Cut-Off Elevation in the finished structure.
 POINT OF PILE ELEVATION AS DRIVEN: Actual point of pile elevation in the finished structure.
 DESIGN AXIAL LOAD: Load carried by each pile as estimated from structural design calculations for Factored LRFD Loadings, Service Limit State.
 CALCULATED FIELD BEARING: Contrary to Section 604.03.07 of the Standard Specifications, in place bearing values are not required for piles bearing on rock when driven to practical refusal.

Field Data

For each pile, the Project Engineer shall record the following on this sheet: Pile Length in Place and Point of Pile Elevation as Driven.
 Submit this record to:
 Kentucky Transportation Cabinet
 Director, Division of Structural Design
 3rd Floor East
 200 Merco Street
 Frankfort, KY 40622

This pile record does not replace other pile records the Project Engineer is required to keep and submit.
 Use HP 12x53 in accordance with BPS-003, c.e. (50 ksi)
 See geotechnical report S-053-2008 and SA-004-2015 for additional information. By reference, this report is part of the contract documents.

THIS SHEET REPLACES SHEET 7



ITEM NUMBER
8-261.30

PREPARED BY
HMB PROFESSIONAL ENGINEERS, INC.

SHEET NO.
S7A
DRAWING NO.
26404

△ CHANGED NOTES PER REVISED GEOTECH. REPORT 18-21-18	
REVISION	DATE
DESIGNED BY: DCK	CHECKED BY: BGS
DETAILED BY: BRM	DCK

Commonwealth of Kentucky	
DEPARTMENT OF HIGHWAYS	
ROUTE KY 92	CROSSING MARSH CREEK
McCREARY	
COUNTY	
FOUNDATION LAYOUT	
PREPARED BY HMB PROFESSIONAL ENGINEERS, INC.	
SHEET NO. S7A	
DRAWING NO. 26404	

PILE RECORD FOR POINT BEARING PILES						
PILE NUMBER	PILE CUT-OFF ELEVATION	PILE LENGTH IN PLACE	POINT OF PILE ELEVATION AS DRIVEN	DESIGN AXIAL LOAD	FEET	TONS
					FEET	TONS
INTEGRAL END BENT 1						
1	1066.90			89		
2	1066.90			89		
3	1066.90			89		
4	1066.90			89		
5	1066.90			89		
6	1066.90			89		
7	1066.90			89		
8	1066.90			89		
9	1066.90			89		

PILE RECORD FOR POINT BEARING PILES						
PILE NUMBER	PILE CUT-OFF ELEVATION	PILE LENGTH IN PLACE	POINT OF PILE ELEVATION AS DRIVEN	DESIGN AXIAL LOAD	FEET	TONS
					FEET	TONS
PIER 1						
10	1046.80			79		
11	1046.80			79		
12	1046.80			79		
13	1046.80			79		
14	1046.80			79		
15	1046.80			79		
16	1046.80			79		
17	1046.80			79		
18	1046.80			79		
19	1046.80			79		
20	1046.80			79		
21	1046.80			79		
22	1046.80			79		
23	1046.80			79		
24	1046.80			79		
25	1046.80			79		
26	1046.80			79		
27	1046.80			79		
28	1046.80			79		
29	1046.80			79		
30	1046.80			79		

PILE RECORD FOR POINT BEARING PILES						
PILE NUMBER	PILE CUT-OFF ELEVATION	PILE LENGTH IN PLACE	POINT OF PILE ELEVATION AS DRIVEN	DESIGN AXIAL LOAD	FEET	TONS
					FEET	TONS
INTEGRAL END BENT 2						
94	1076.11			89		
95	1076.11			89		
96	1076.11			89		
97	1076.11			89		
98	1076.11			89		
99	1076.11			89		
100	1076.11			89		
101	1076.11			89		
102	1076.11			89		

GENERAL NOTES

△ HAMMER ENERGY: SINGLE-ACTING DIESEL HAMMERS WITH RATED ENERGIES BETWEEN 10 AND 30 KIP-FT ARE RECOMMENDED TO ADEQUATELY DRIVE THE 12X53 H-PILES WITHOUT ENCOUNTERING EXCESSIVE BLOW COUNTS OR OVERSTRESSING THE PILES AT THE PIERS.

△ SINGLE-ACTING DIESEL HAMMERS WITH RATED ENERGIES BETWEEN 30 AND 75 KIP-FT ARE RECOMMENDED TO ADEQUATELY DRIVE THE 12X53 H-PILES WITHOUT ENCOUNTERING EXCESSIVE BLOW COUNTS OR OVERSTRESSING THE PILES AT THE END BENTS.

△ THE USE OF HAMMERS OTHER THAN SINGLE-ACTING DIESEL MAY REQUIRE DIFFERENT ENERGIES. THE CONTRACTOR SHALL SUBMIT THE PROPOSED PILE DRIVING SYSTEM TO THE DEPARTMENT FOR APPROVAL PRIOR TO THE INSTALLATION OF THE FIRST PILE. APPROVAL OF THE PILE DRIVING SYSTEM BY THE ENGINEER WILL BE SUBJECT TO SATISFACTORY FIELD PERFORMANCE OF THE PILE DRIVING PROCEDURES.

PILE LAYOUT DIMENSIONS ARE MEASURED AT THE BOTTOM OF FOOTINGS.

ALL PILES SHALL BE HP12X53 (50 KSI).

ALL PILES SHALL BE FITTED WITH PILE POINTS.

Driving Criteria

DRIVING CRITERIA: Drive point bearing piles to practical refusal.

△ PRACTICAL REFUSAL (Case 2): For this project minimum blow requirements are reached after total penetration becomes 1/2 or less for 10 consecutive blows, practical refusal is obtained after the pile is struck an additional 10 blows with total penetration of 1/2 or less. Advance the pile to the depth specified in the driving instructions specified above to depths determined by test piles (or surface penetration sheets). Immediately cease driving operations if the pile visibly becomes damaged during driving. If hard driving encountered because of obstructions or an object, such as a boulder, before the pile is advanced to the depth anticipated, the Engineer will determine if more blows than the average driving resistance specified for practical refusal is required to further advance the pile. Drive additional production and test piles if directed by the Engineer.

PILE RECORD FOR POINT BEARING PILES						
PILE NUMBER	PILE CUT-OFF ELEVATION	PILE LENGTH IN PLACE	POINT OF PILE ELEVATION AS DRIVEN	DESIGN AXIAL LOAD	FEET	TONS
					FEET	TONS
PIER 3						
52	1044.64			79		
53	1044.64			79		
54	1044.64			79		
55	1044.64			79		
56	1044.64			79		
57	1044.64			79		
58	1044.64			79		
59	1044.64			79		
60	1044.64			79		
61	1044.64			79		
62	1044.64			79		
63	1044.64			79		
64	1044.64			79		
65	1044.64			79		
66	1044.64			79		
67	1044.64			79		
68	1044.64			79		
69	1044.64			79		
70	1044.64			79		
71	1044.64			79		
72	1044.64			79		

PILE RECORD FOR POINT BEARING PILES						
PILE NUMBER	PILE CUT-OFF ELEVATION	PILE LENGTH IN PLACE	POINT OF PILE ELEVATION AS DRIVEN	DESIGN AXIAL LOAD	FEET	TONS
					FEET	TONS
PIER 4						
73	1048.39			79		
74	1048.39			79		
75	1048.39			79		
76	1048.39			79		
77	1048.39			79		
78	1048.39			79		
79	1048.39			79		
80	1048.39			79		
81	1048.39			79		
82	1048.39			79		
83	1048.39			79		
84	1048.39			79		
85	1048.39			79		
86	1048.39			79		
87	1048.39			79		
88	1048.39			79		
89	1048.39			79		
90	1048.39			79		
91	1048.39			79		
92	1048.39			79		
93	1048.39			79		

Definitions of Terms

PILE CUT-OFF ELEVATION: Elevation of the top of pile in the finished structure.

PILE LENGTH IN PLACE: Actual pile length below the Pile Cut-Off Elevation in the finished structure.

POINT OF PILE ELEVATION AS DRIVEN: Actual point of pile elevation in the finished structure.

DESIGN AXIAL LOAD: Load carried by each pile as estimated from structural design calculations for Factored LRFD Loadings, Service Limit State.

CALCULATED FIELD BEARING: Contrary to Section 604.03.07 of the Standard Specifications, in place bearing values are not required for piles bearing on rock when driven to practical refusal.

Field Data

For each pile, the Project Engineer shall record the following on this sheet: Pile Length in Place and Point of Pile Elevation as Driven.

Submit this record to:

Kentucky Transportation Cabinet
Director, Division of Structural Design
3rd Floor East
200 Metro Street
Frankfort, KY 40622

This pile record does not replace other pile records the Project Engineer is required to keep and submit.

Use HP 12x53 in accordance with BPS-003, c.e. (50 ksi)

See geotechnical report S-053-2008 and SA-004-2015 for additional information. By reference, this report is part of the contract documents.

△ CHANGED NOTES PER REVISED GEOTECH. REPORT 8-21-18

REVISION	DATE	CHECKED BY
	OCTOBER, 2015	BGS
DESIGNED BY:	DCK	DCK
DETAILED BY:	BRM	
Commonwealth of Kentucky		
DEPARTMENT OF HIGHWAYS		
COUNTY		
McCREARY		
ROUTE	CROSSING	
KY 92	MARSH CREEK	
FOUNDATION LAYOUT		
PREPARED BY		
HMB PROFESSIONAL ENGINEERS, INC.		
SHEET NO. S7A		
DRAWING NO. 26404		

THIS SHEET REPLACES SHEET 7

ITEM NUMBER
8-261.30